



JOHN KING

Conveyor Chains & Sprockets Worldwide

Bakery Industry Chains.



Material Processing Solutions Since 1926.



Get in Touch With Us

John King Chains Limited
Lancaster Close, Sherburn-in-Elmet, LS25 6NS, UK
ENGLAND

or Call Us by Phone

+44 1977 681 910

Rev.06.10.2023
This design is the exclusive property of JOHN KING CHAIN Ltd
and copyright protected under the Designs and Patents Act 1988.

Mission Statement and Values.

Our mission is to produce high-performing products and solutions, in a safe, efficient and consistent manner that is aimed at surpassing the expectations of our global customers. We will support our products by providing superior customer care.

Our care extends to the environment, employees, their families and the wider community. We endeavour to provide a safe, rewarding work environment that recognises individual achievement and fosters the skills of teamwork and communication.

The challenges of competing in a global market are changing all the time, so it is essential to our continued success that everyone who works at John King has the same positive attitude.

What will never change is the commitment to a high degree of professionalism conducted with a high level of courtesy.

There are six elements to the John King Group positive attitude:



The manufacturers 'Mentality'

A total commitment to 'Quality'



With a primary focus on 'Safety'

With a high level of 'Integrity'



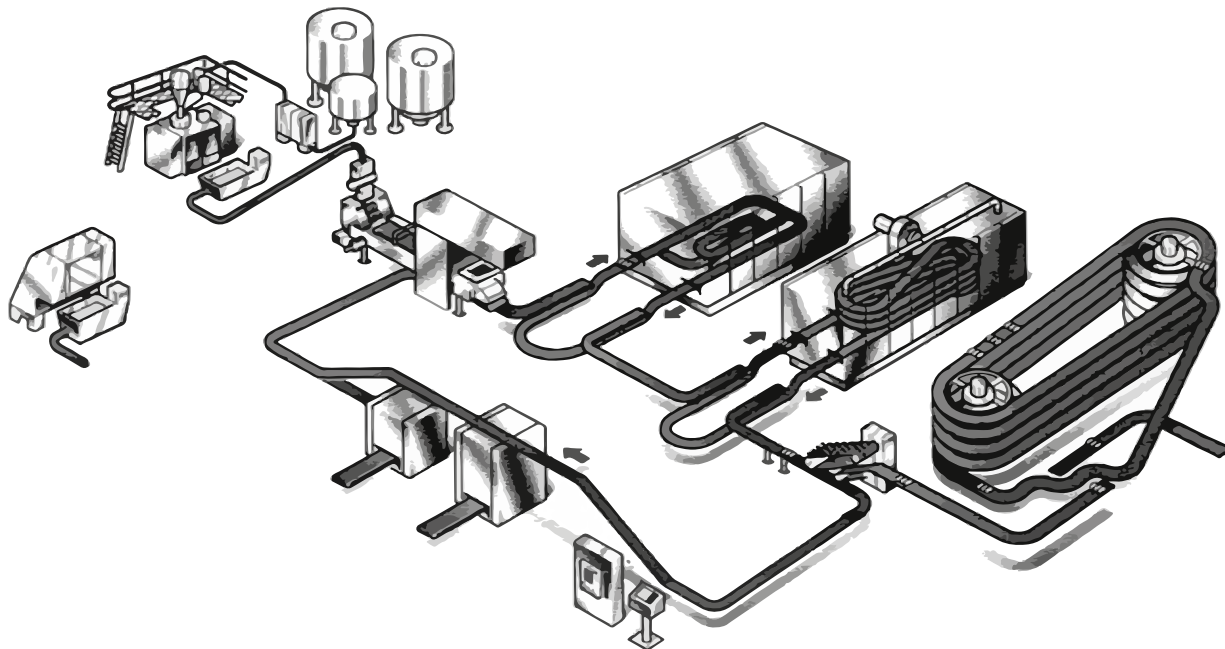
With an objective to 'Innovate'

Always remembering to 'Enjoy' life in the Kingdom!



US Style High Speed Baking.

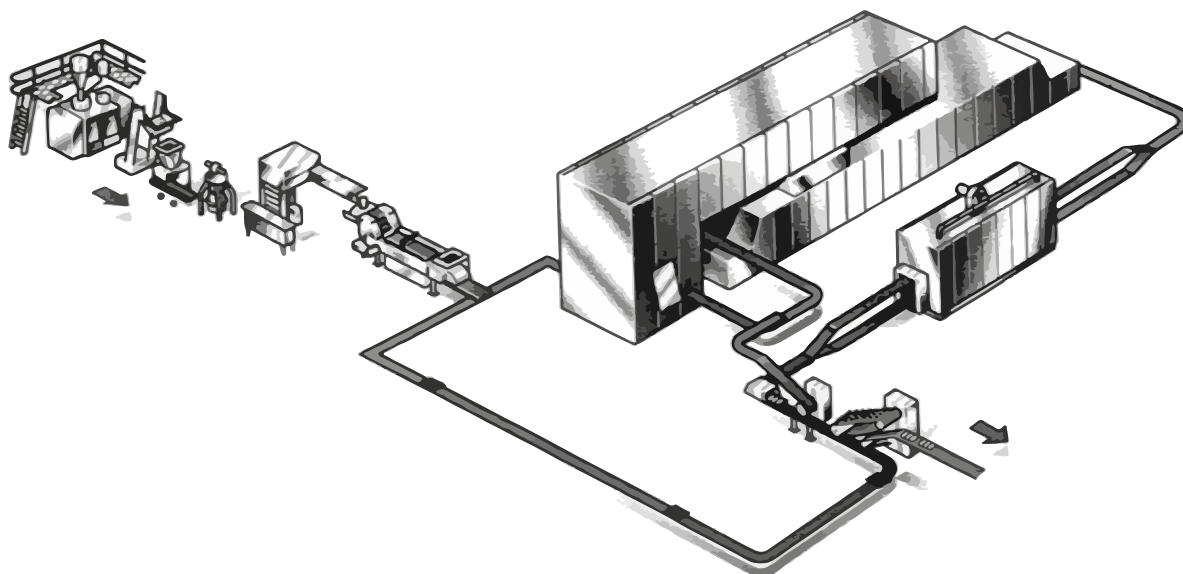
Pages 10-19 highlight chains to suit American style proof and bake systems. These are used to bake almost all types of products that can be produced in a tin, in a pan or on a frame. This system is now the exclusive choice for burger bun production. John King manufacture all the principal proofer and oven chains required within this system. This is not exhaustive and John King technical and commercial departments are available to assist with any additional styles and constructions required.



European Style Baking.

CHAINS MANUFACTURED BY GROUP COMPANY **PRECISION CHAINS** IN ENGLAND.

Pages 20-27 illustrate a variety of chains employed in a European tunnel style baking system. John King manufacture all the principal types. This is not exhaustive and John King technical and commercial departments are available to assist with any additional styles and constructions required.



From Survey to Drawing to Production to Installation

Your integrated supply partner.

In the aggressive environment of bakery production there is an ongoing requirement for refurbishment and replacement of plant and equipment in all areas of the process. John King Group is a combined business uniquely equipped to serve the industry with a full spectrum of essential engineering services to ensure customers equipment is in the best condition in order to maintain essential processes.



Inspection, Survey and Consultation.

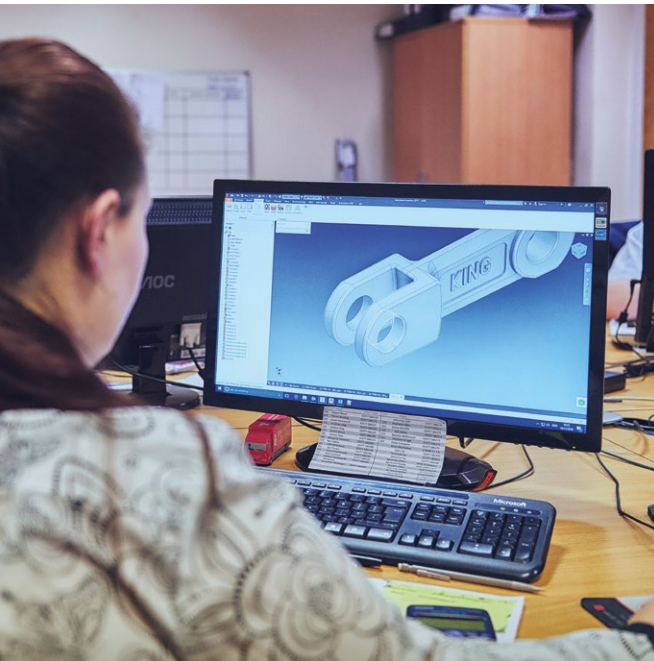
As part of the supply package, qualified engineers will come to site and inspect items of plant and equipment to establish and report on the condition. Subsequent consultation generally includes means for improvement such as: materials employed, design, construction, implementation, additional operation and maintenance advice.



Industry Leading Steel Processors.

With decades of in-house experience in metal processing and fabrication, we use the latest technology and techniques to deliver quality, bespoke solutions for our clients. From laser cutting to punching, bending and welding our skilled team will deliver a high-quality solution that is both on time and within budget.





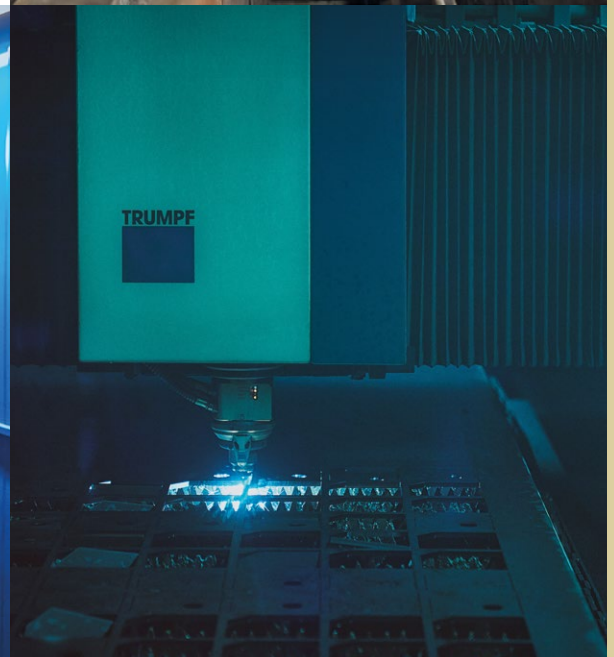
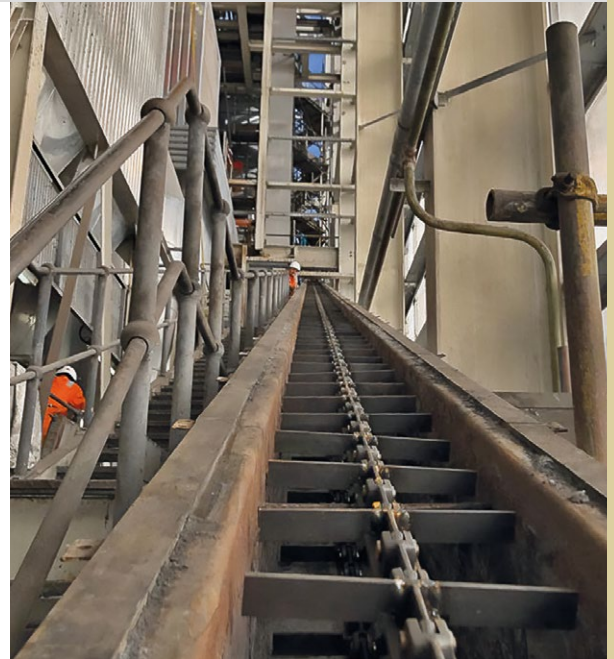
Design and Drawing Service.

Design and technical drawing are part of our service. We create the technical drawing directly from our site survey or work with you to create a complete design brief to meet your fabrication needs. We will support you in developing and improving the plant and equipment.



Fully Integrated Installation.

Our site service team, comprising experienced mechanical fitters and fabricators will install all types of mechanical handling equipment, metal fabrications and equipment at your premises in the agreed timescale with a high degree of competence while operating under strict safety protocols.





The Undisputed Kings of Laser Profiling and Fabrication.

FROM SURVEY TO DRAWING TO PRODUCTION – THE ONE-STOP SHOP

John King Laser was established in 2007 primarily to service the mechanical handling division. It was well understood that the available capacity surpassed that of in-house requirements and the business model from the outset was to sell laser-cut, formed and fabricated parts to a wide variety of customers, producing a wide range of machinery and equipment.

More recently, John King Laser has been able to support the groups' site service division, where bespoke fabrications have been required.

The laser division has remained autonomous from the start while critically benefitting as part of the Group structure in investing in new technology to give the division a distinct advantage in product efficiency and quality. The recent installation of the latest and probably best laser capacity in the country is a testament to this.

Manufacturing Capabilities.

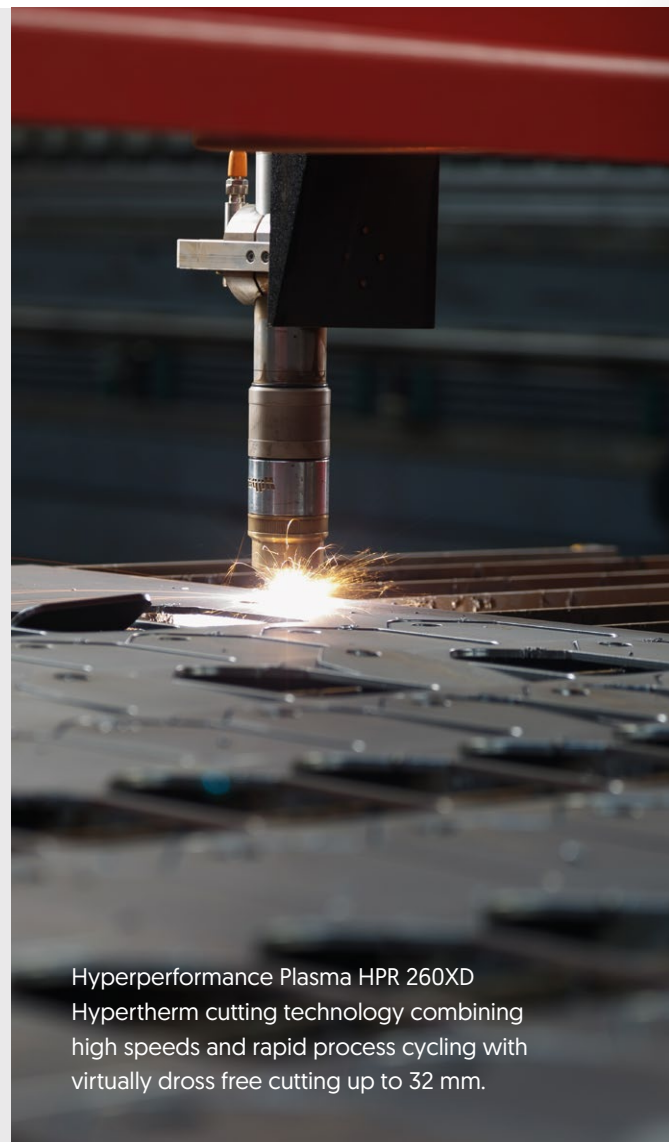
The 2020s business is a lean enterprise working from a modern manufacturing facility employing the best production techniques including fiber laser technology, plasma for thicker material sections, CNC machining and robotics. Group structure provides the internal resources to implement production management systems that ensure the highest quality, consistent and competitive products produced in a safe environment. All manufacturing is conducted within the dictates of ISO 9001 to the latest 2015 standard to ensure quality objectives are monitored and maintained.

LASER CUTTING CAPABILITIES

- Mild and carbon steel up to 25 mm.
- Stainless steel up to 15 mm.
- Aluminium up to 12 mm.

FLAME CUTTING AND PLASMA CUTTING CAPABILITIES

- Machine bed size of 4 m x 2.5 m.
- Flame cutting up to 110 mm.
- Plasma cutting up to 30 mm.



Hyperperformance Plasma HPR 260XD
Hypertherm cutting technology combining high speeds and rapid process cycling with virtually dross free cutting up to 32 mm.



Press Technology.

In support of our impressive range of flatbed processing capabilities, we operate CNC Synchro press brake machines capable of pressing parts with capacities up to and including 220 tons and 4000 mm in length. With smaller machines with 2000 mm gap and 100 mm stroke for smaller parts in higher volume production.



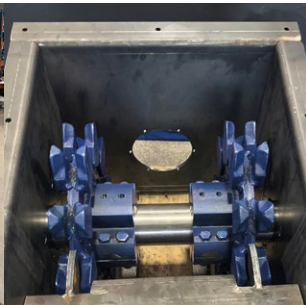
Welding and Fabrication.

Our welding and fabrication capacity includes a high level of skill in both internal and external projects. This enables John King's laser and fabrication division to offer an all-encompassing manufacturing service. The site service division will thereafter take charge of the installation as required.

Ash hopper during fabrication as a direct replacement to an existing unit.



Replacement conveyor sections reproduced on a like for like basis.



A new precipitator dust conveyor during manufacture and prior to entering the paint shop.



Chute sections to make up a full arrangement ready for site service installation.



Site Services The Complete Supply Package.



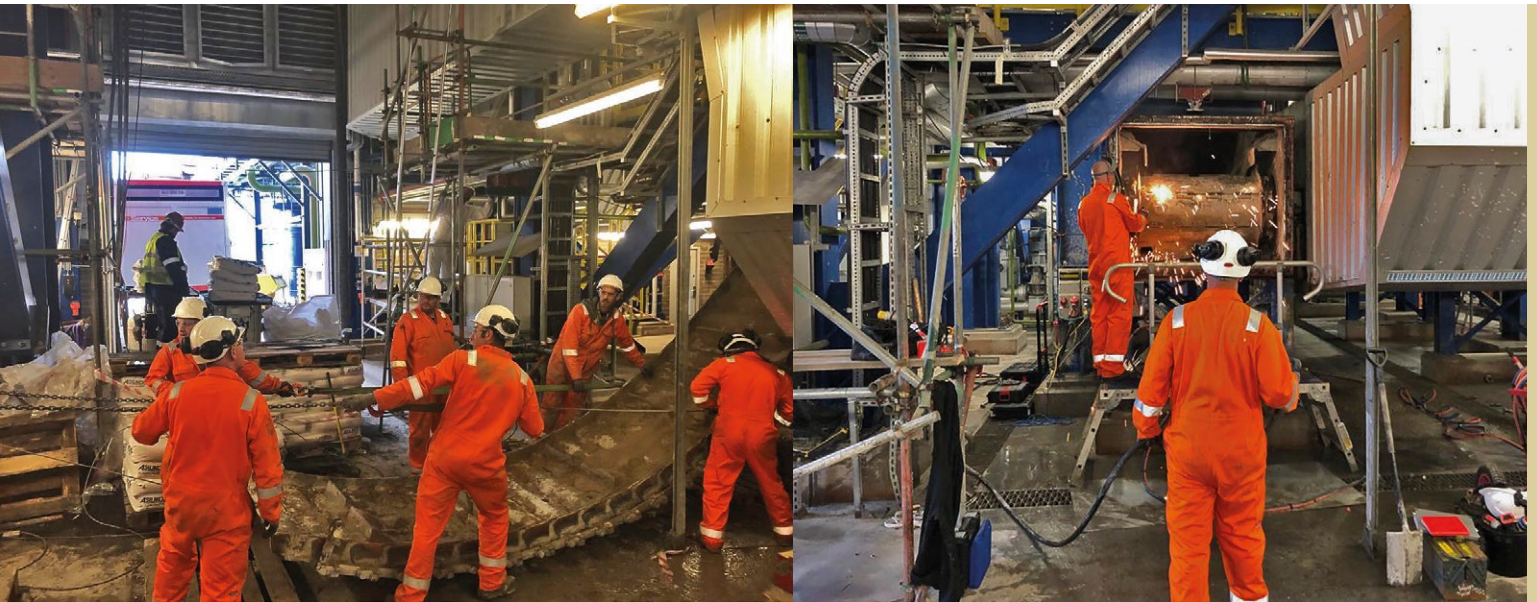
Bulk handling experts you can rely on.

The John King Site Service Division employs a highly skilled team of engineers solely dedicated to the **service and maintenance of bulk material handling equipment**, which includes – installing, servicing and maintaining all aspects of mechanical handling equipment and related plant and machinery.

The market demands **high-quality chains** and **expert installation**. John King Chains uniquely **offers both**. Make the most of it.

- **Secure optimum equipment reliability** through **best-quality chains** and **conveyor component** spares.
- Take advantage of **the quickest deliveries of conveyor spares** of any manufacturer in the market.
- Let **the conveyor specialist** look after your equipment to ensure **optimum performance** and **service life**.
- Allow us to highlight technical improvements **to enhance the performance of your existing equipment**.
- Enter into **a professional partnership** to develop a service strategy tailored to your needs.





Site Services Scope of Supply.

- **Inspection and maintenance** of all mechanical handling equipment by specialist engineers
- **Troubleshooting** and problem-solving within mechanical handling equipment.
- **Supply of high-quality conveyor chains** and related conveyor spares.
- **Specialist in the supply of heat resistant components.**
- **In-house laboratory** for material and heat treatment analysis with full metallurgical support.
- **Manufacture and installation of all types of fabrications** from pre-hardened plate, stainless steels or standard materials.
- **Replacement of sections or complete conveyors and elevators** including manufacture and installation.
- **Design and construction of complete bulk handling equipment** including installation service.
- **Repair and maintenance** of all related plant and equipment.

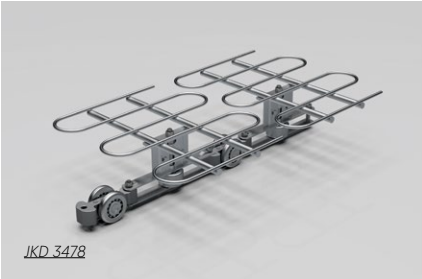
Safety at Work.

We are committed to providing and maintaining a healthy and safe environment for all employees and protecting the safety of contractors, customers, visitors and all other persons affected by our operations.

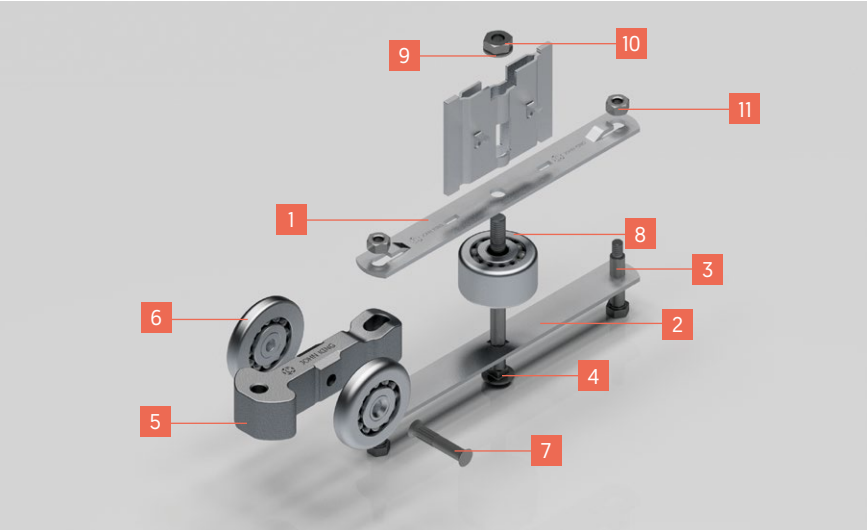
This is achieved by assessing all significant risks, designing safe work systems and eliminating hazards where reasonably practicable. **This is encapsulated within the company HSE policy and enshrined in the everyday culture of our business.**



JKD 3478 Lanham “New Generation”.

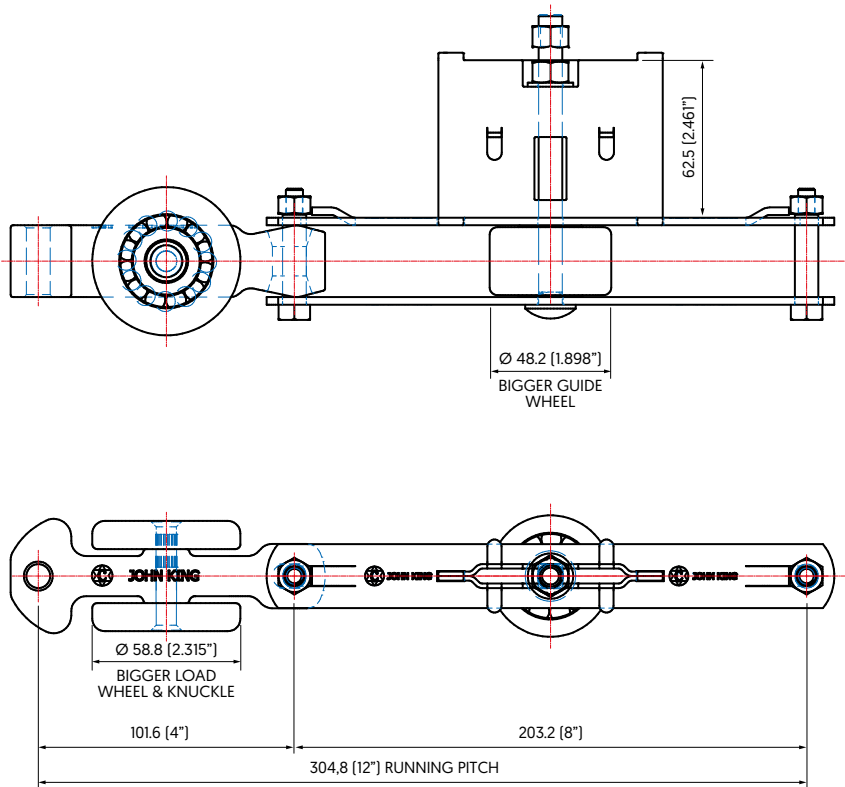


The ‘New Generation’ chains offer an uprated design as compared to the ‘original’ and are 100% interchangeable with existing chains found in proofer and oven systems. John Kings experience in materials and heat treatment ensures optimum service performance. Available as a plated proofer chain or high temperature oven chain to meet your system requirements.



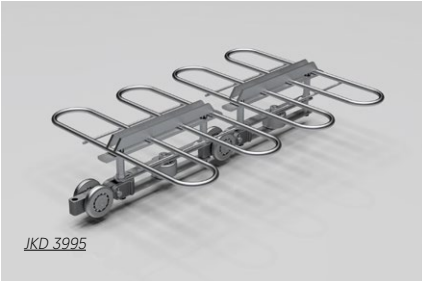
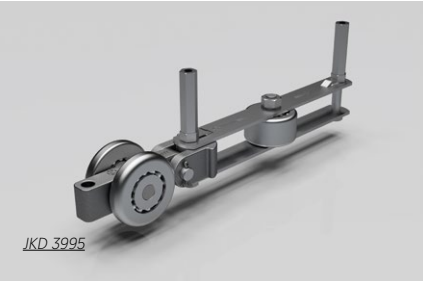
JKD 3478		
Item	Item Code	Description
1	30/D8374/U/*	Top Link Plate
2	30/D3478/***-F	Bottom Link Plate
3	26/D3478/***-G	Small Bolt
4	26/D3478/***-I	Long Bolt
5	31/D3478/***-A	Cast Knuckle
6	43/D3995/***-C	Load Wheel
7	27/D3478/***-L	Rivet Pin
8	43/D3478/***-D	Guide Wheel
9	20/D3478/***-K	Washer
10	24/D3478/***-J	Half Nut
11	23/D3478/***-H	M8 Binx Nut

*** Insert Code LNO For Lanham New Gen Oven or LNP For Lanham New Gen Proofer

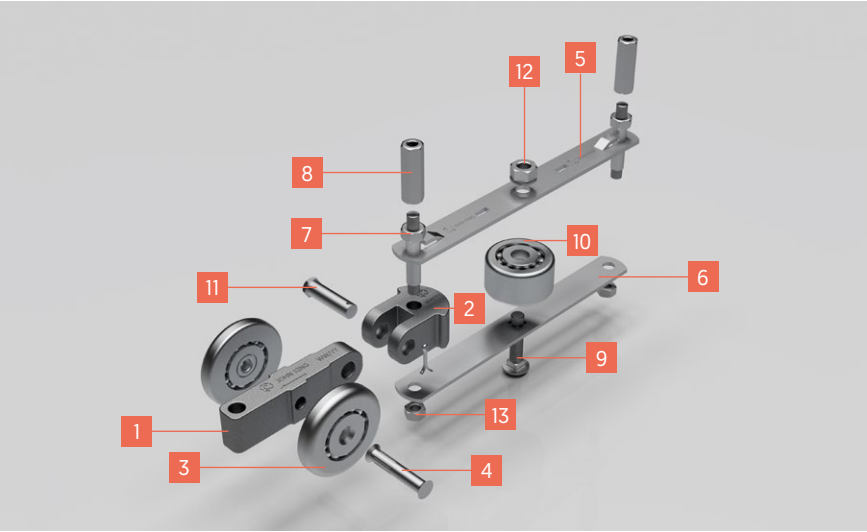




JKD 3995 Baketech.

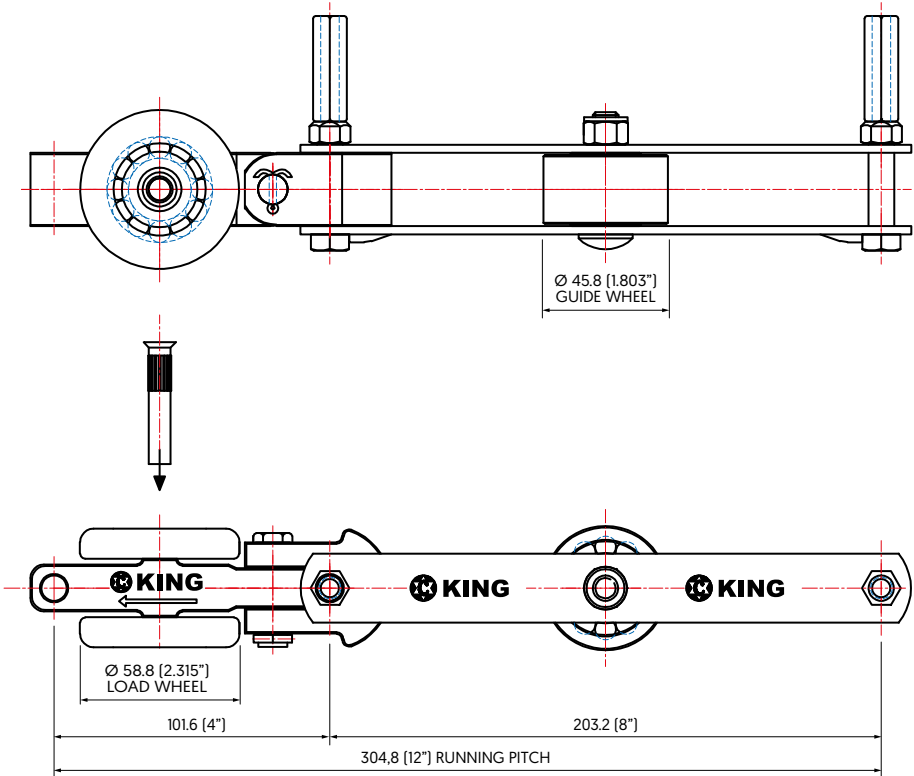


This 'double knuckle' proofer and oven chain offers greater flexibility plant layout in considering high volume bread and roll production systems. Supplied as a plated proofer chain or high temperature oven chain. Grids are mounted onto two vertical column posts giving greater rigidity in use and ease of maintenance.



JKD 3995		
Item	Item Code	Description
1	31/D3995/***-A	Cast Knuckle
2	31/D3995/***-B	Cast Knuckle Swivel
3	43/D3995/***-C	Load Wheel
4	27/D3478/***-L	Rivet Pin
5	30/D8374/U/*	Top Link Plate
6	30/D3478/***-F	Bottom Link Plate
7	26/D3995/***-G	Small Bolt
8	23/D3995/***-Q	Long Hex Column Nut
9	26/D3995/***-I	True Bolt
10	43/D3478/***-D	Guide Wheel
11	26/D3995/***-M	Knuckle Connecting Pin
12	24/D3995/***-J	Nut
13	23/D3995/***-H	Lock Nut

*** Insert Code **BTO** For Bake-Tech Oven or **BTP** For Bake-Tech Proofer

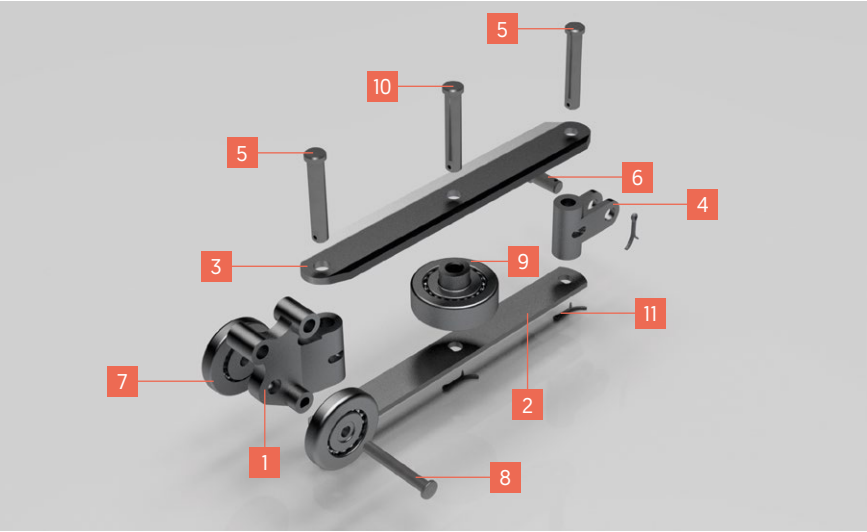




JKD 4619 **Stewart.**

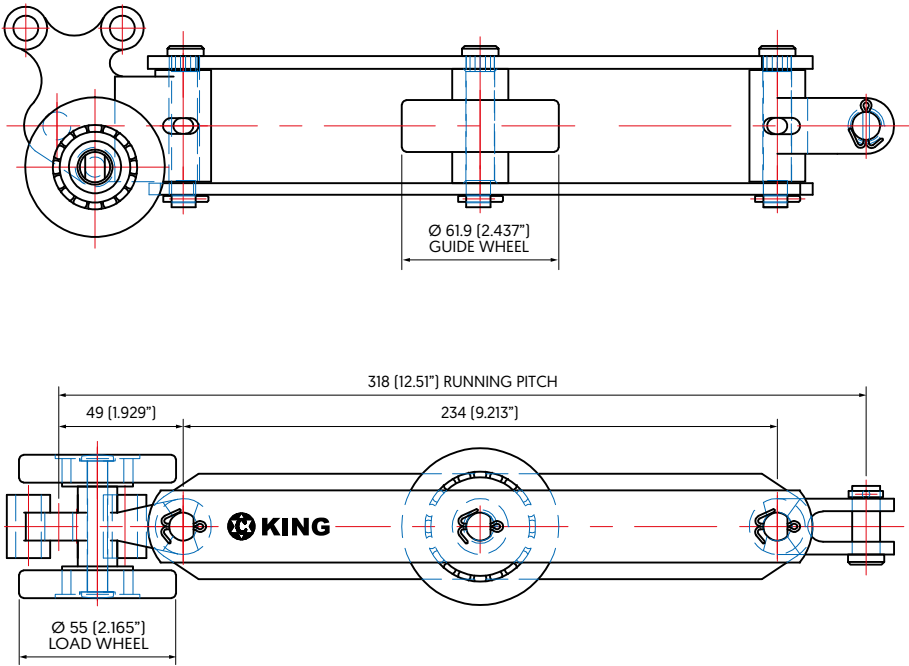


A 'double knuckle' chain with several unique features including larger diameter load and guide wheel bearings. Grids are mounted directly to the main load wheel casting. Supplied as a plated proofer chain or high temperature oven chain. Dimensional and material specifications match or exceed existing standards and are fully interchangeable within the production system.

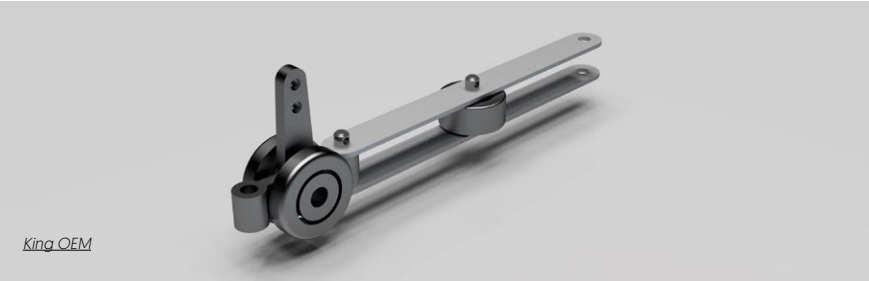


JKD 4619		
Item	Item Code	Description
1	31/D4619/**-A	Cast Knuckle
2	30/D4619/**-F	Bottom Link Plate
3	30/D4619/**-E	Top Link Plate
4	31/D4619/**-B	Cast Knuckle Swivel
5	26/D4619/**-I	Long Connecting Pin
6	26/D4619/**-G	Short Connecting Pin
7	43/D4619/**-C	Load Wheel
8	27/D4619/**-L	Rivet Pin
9	43/D4619/**-D	Guide Wheel
10	26/D4619/**-N	Guide Wheel Pin
11	28/JKS2/SS	SS Split Cotter Pin

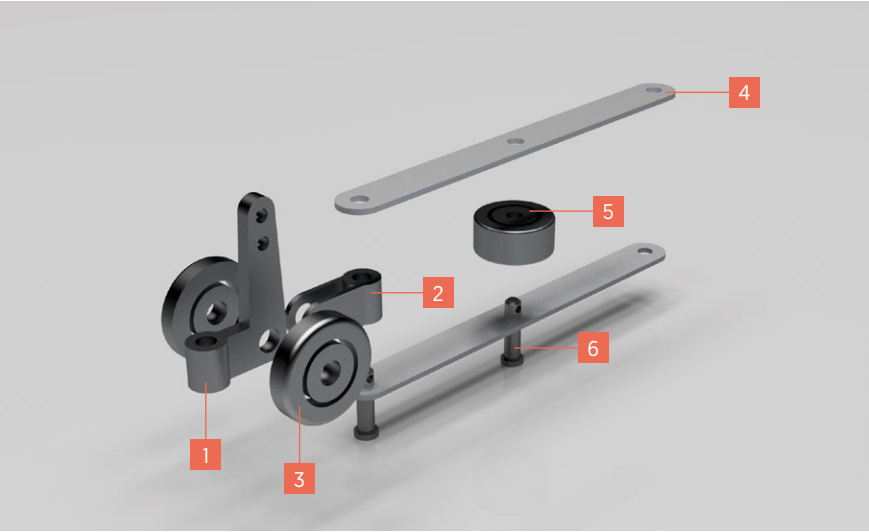
** Insert Code **SO** For Stewart Oven or **SP** For Stewart Proofer



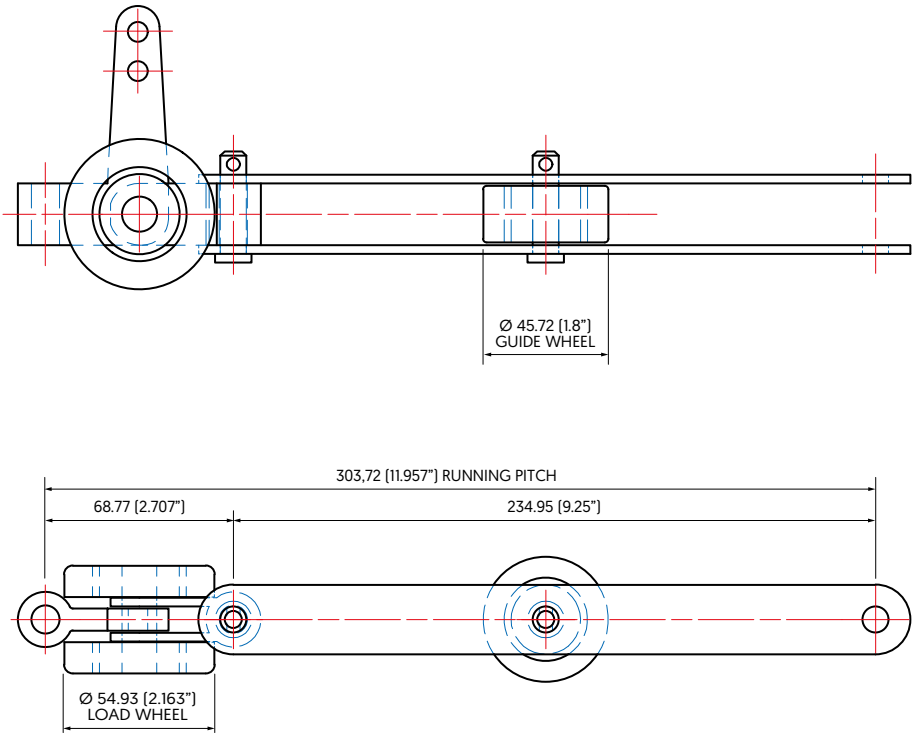
King Replacement Chains OEM Standards.



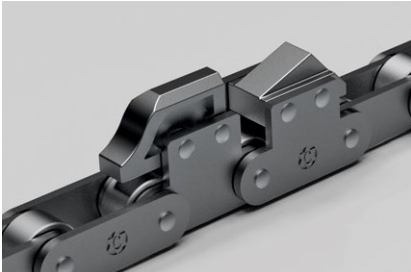
John King are able to reproduce all types of bakery industry bi-planner chains. Samples are required for a full analysis of dimension, materials, heat treatment conditions and general construction. Where considered appropriate we will up-rate the product to ensure that ultimate performance surpasses historical experience and therefore customer expectations.



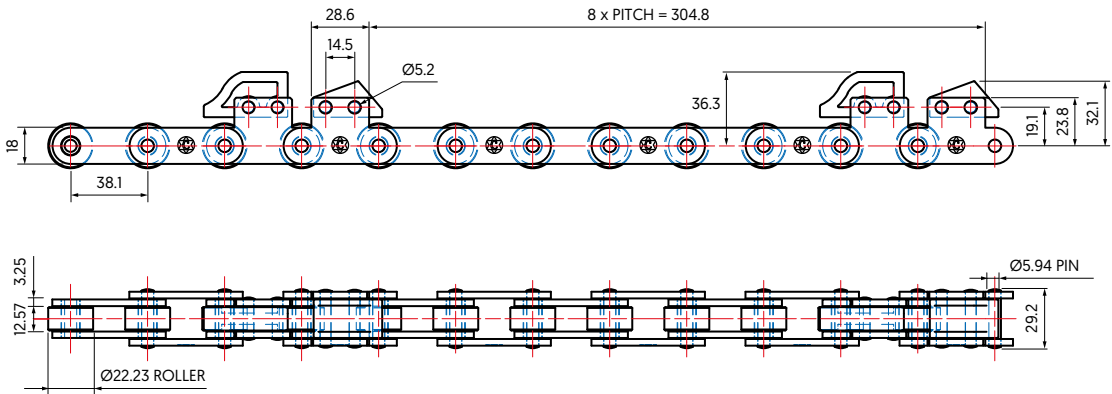
OEM Standards	
Item	Description
1	1001 Truck Part A
2	1001 Truck Part B
3	Bearing
4	Chain Plate
5	Horizontal Bearing
6	Connecting Pin



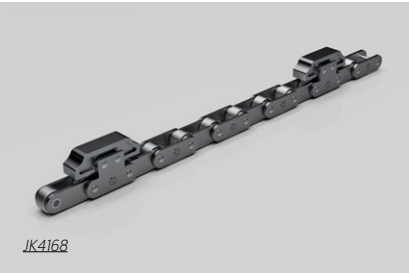
Lanham Lug Chain JK762/SK2.



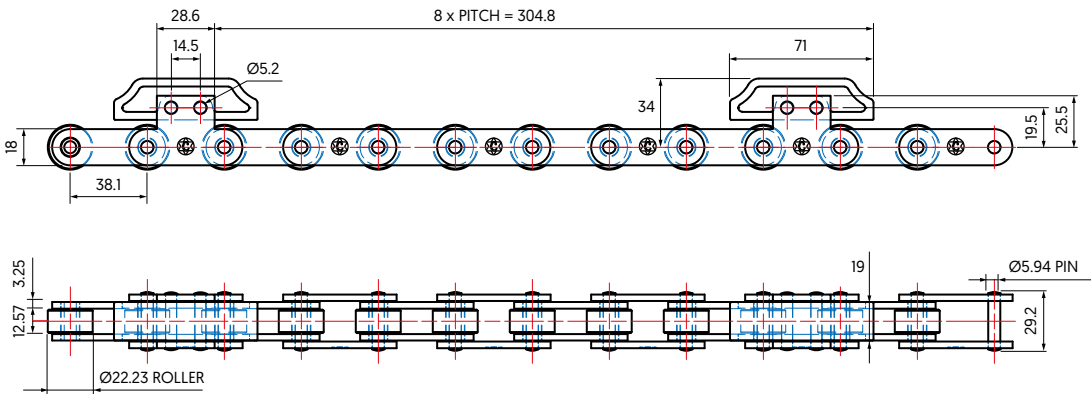
Pitch length options		
Product Code	Number of Pitches	Number of Attachments
JK762/SK2/L72	72	9



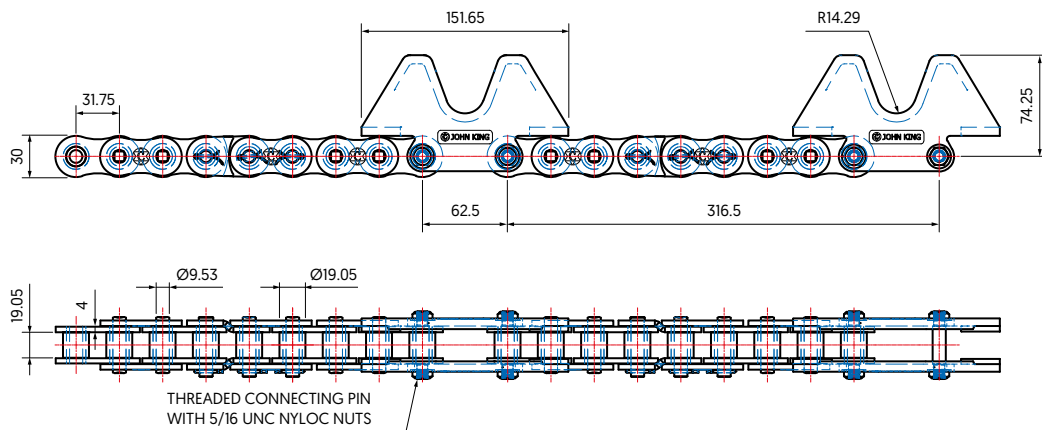
Baketech Lug Chain JK4168.



Pitch length options		
Product Code	Number of Pitches	Number of Attachments
JK4168/L64	64	8
JK4168/L72	72	9



Stewart Lug Chain JK10647.



JKO1264F

High integrity lubricants for ovens chains.



More information on the website.

JKO1001F

High integrity lubricants for proofer chains.



More information on the website.

JKO1042F

Specialist lubricant for spiral and tunnel freezers.



More information on the website.

JOHN KING Conveyor Chains & Sprockets Worldwide

World Class Chain Lubricants

JKO1264F
High Temperature Food Quality Chain Oil

- Cast link chains
- Combination chains with or without semi-precision bearings
- Overhead conveyor chains
- Steel bush chains with or without outboard rollers
- Steel roller chains with wear bush assemblies
- Steel roller conveyor chains

Pack sizes:
20 l = 5.3 US gallons
205 l = 54 US gallons

JOHN KING LUBRICANTS

Get in Touch With Us
Lancaster Business Park
Sharburn in Embsay LS25 4NS UK
ENGLAND
or Call Us by Phone
+44 1977 681 910

Material Processing Solutions Since 1926

JOHN KING Conveyor Chains & Sprockets Worldwide

World Class Chain Lubricants

JKO1001F
Food Quality Chain Oil

- Adapted transmission chains
- Combination chains with semi-precision bearings
- Steel bush conveyor chains
- Steel roller conveyor chains
- Transmission chains

Pack sizes:
20 l = 5.3 US gallons
205 l = 54 US gallons

JOHN KING LUBRICANTS

Get in Touch With Us
Lancaster Business Park
Sharburn in Embsay LS25 4NS UK
ENGLAND
or Call Us by Phone
+44 1977 681 910

Material Processing Solutions Since 1926

JOHN KING Conveyor Chains & Sprockets Worldwide

World Class Chain Lubricants

JKO1042F
Low Temp Food Chain Oil

- Heavy duty drive chains (spiral freezers)
- Steel bush chains with cross rods
- Steel roller conveyor chains
- Steel roller conveyor chains with mesh bolting

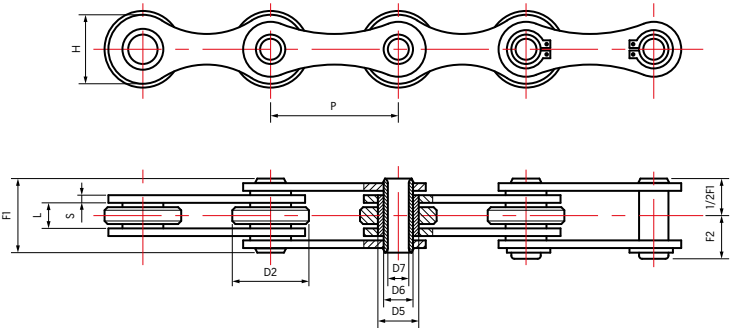
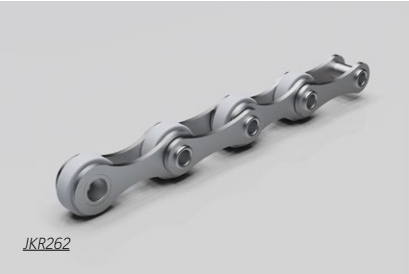
Pack sizes:
20 l = 5.3 US gallons
205 l = 54 US gallons

JOHN KING LUBRICANTS

Get in Touch With Us
Lancaster Business Park
Sharburn in Embsay LS25 4NS UK
ENGLAND
or Call Us by Phone
+44 1977 681 910

Material Processing Solutions Since 1926

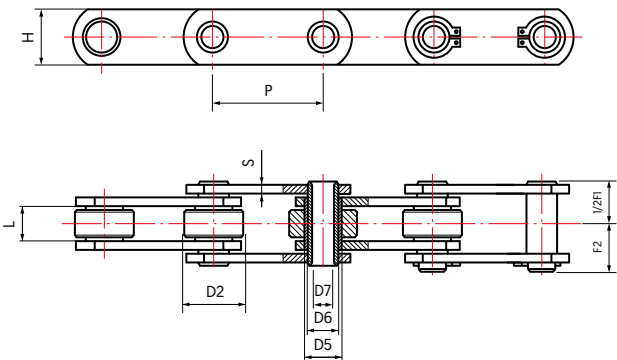
Bakery Conveyor Chains for General Transport.



Bakery Conveyor Chains for General Transport												
Chain Number	Pitch	Rollers	Bushings	Hollow Pins		Over-All Pin & Cotter Between		Between Sidebars	Sidebars		Breaking Load	Average Weight
		Outside Diameter		Diameter					Thickness	Height		
	P	D2	D5	D6	D7	F1	F2	L	S	H	kN	kg/m
	mm											
JKR261	50	30	16	11.5	8.2	26.5	14.5	10	3	25.5	60	2.2
JKR262	50.8	30	16	11.5	8.2	26.5	14.5	10	3	25.5	60	2.1
JKR262SS*	50.8	30	16	11.5	8.2	26.5	14.5	10	3	25.5	32	2.1
JKR3865AR	60	30	16	11.5	8.2	26.5	14.5	10	3	26	60	1.5
JKR3604R	63	30	16	11.5	8.2	26.5	14.5	10	3	26	60	2.3
JKR263	100	30	16	11.5	8.2	26.5	14.5	10	3	25.5	60	1.5

* Stainless steel chain
Options: Standard specification stainless steel,
Option of polyethylene rollers, Zinc plates version where appropriate.

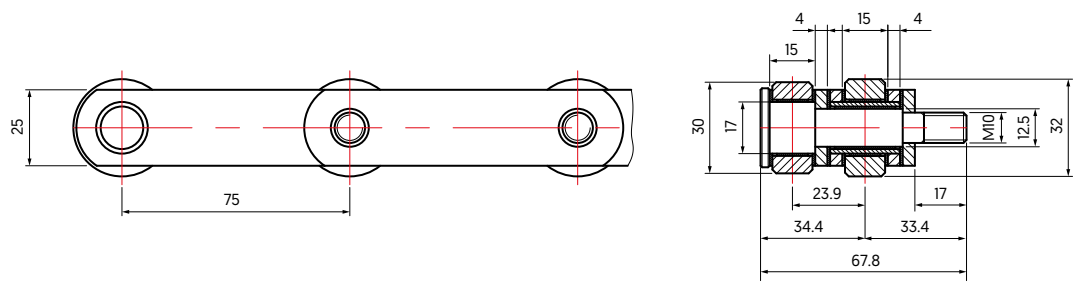
Non Standard Hollow Pin Series Oven Chain.



Non Standard Hollow Pin Series Oven Chain											
Chain Number	Pitch	Rollers	Bushings	Hollow Pins		Over-All Pin & Cotter Between		Between Sidebars	Sidebars		Breaking Load
		Outside Diameter		Diameter					Thickness	Height	
	P	D2	D5	D6	D7	F1	F2	L	S	H	
	mm										
JKR1368*	50	31.75	17.12	10	9.7	28	17.1	11.5	3	25	40
JKR500CRP	50	31	17	14	10.2	35	19.5	15	4	25	65
JKR3835**	75	45	24	18	12.4	44	27.5	22	4	35	120
JKR2467	100	60	26	18	10.2	51	33	25	5	40	135
JKR4858	100	65	30.8	22	10.5	75	–	36	6	50	190

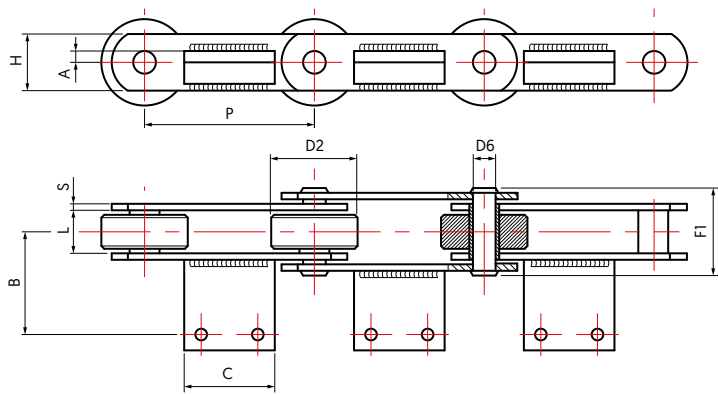
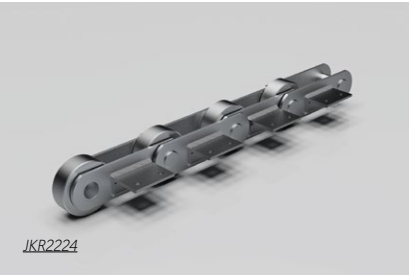
* Chain with solid pins and hollow pins every ... links.
** Hollow pins every 3 links.

Bread Baking Chain P. 75x15x32 ØR.

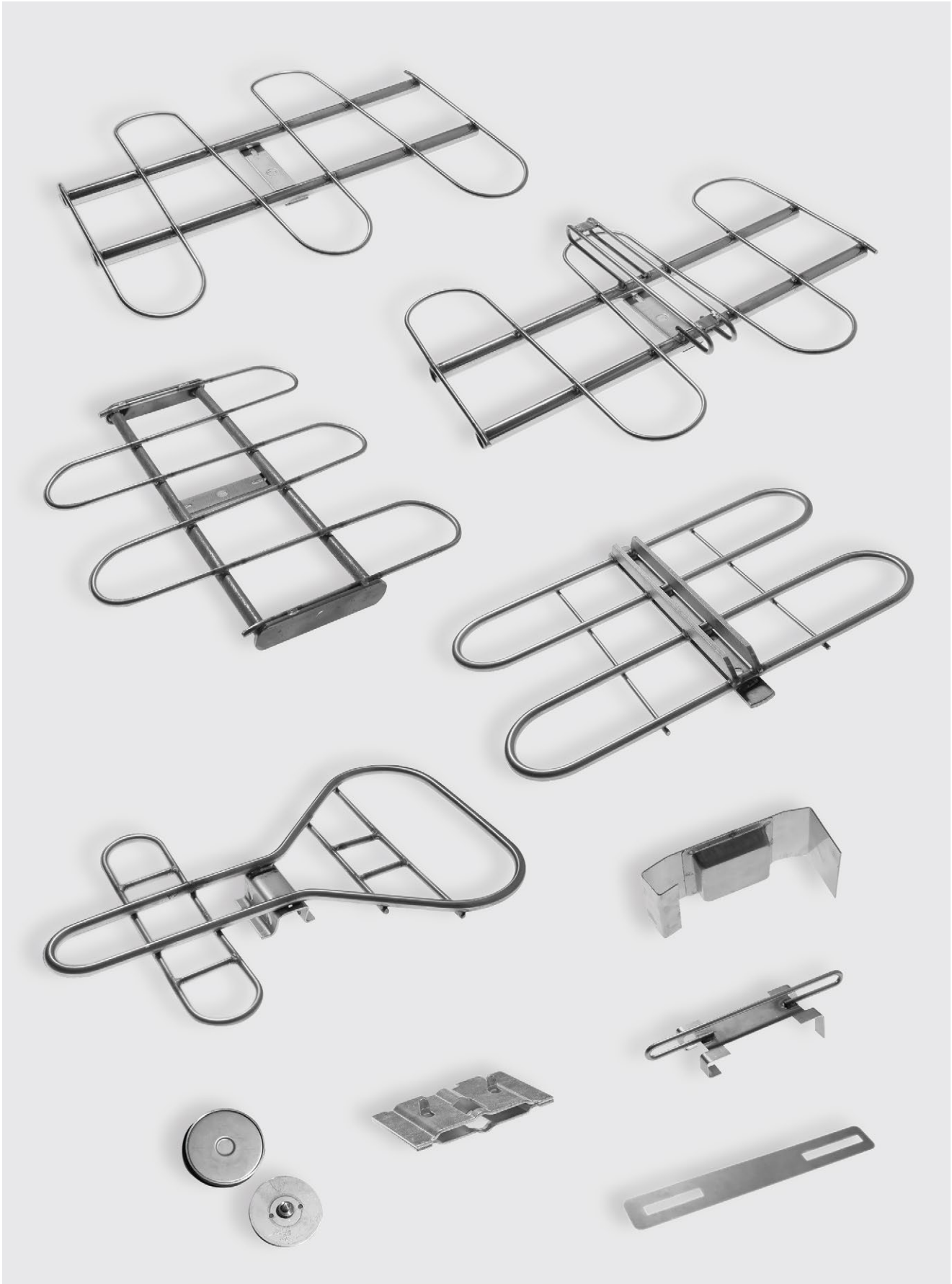


Working temperature: 250-300°C.

Non Standard Solid Pin Series Oven Chain.



Non Standard Solid Pin Series Oven Chain											
Chain Number	Pitch	Rollers	Pins	Over-All Pin	Between Sidebars	Sidebars		A	B	C	Breaking Load
		Outside Diameter	Diameter			Thickness	Height				
	P	D2	D6	F1	L	S	H				
	mm										
JKR1596	75	45	12	43	22	4	35	17.5	50	50	100
JKR2224	100	60	18	43.5	22	4	40	6	45	50	115
JKR3636	100	18	12	43.5	22	4	30	—	—	—	64
JKR3030	100	60	14	57.5	25	5	50	—	—	—	150
JKR4983	100	65	22	75	36	6	50	4	45	60	190
JKR2784	100	60	18	71	40	6	40	6	58	60	150
JKR5062	100	60	18	71	40	6	40	6	58	50	150
JKR4034	125	40	12	43.5	22	4	30	15	77	80	80
JKR4929R	125	70	20	78	37	7	50	9	—	58	260
JKR4543	355.6	60	16	80.5	49	6	40	1	63.5	283	140



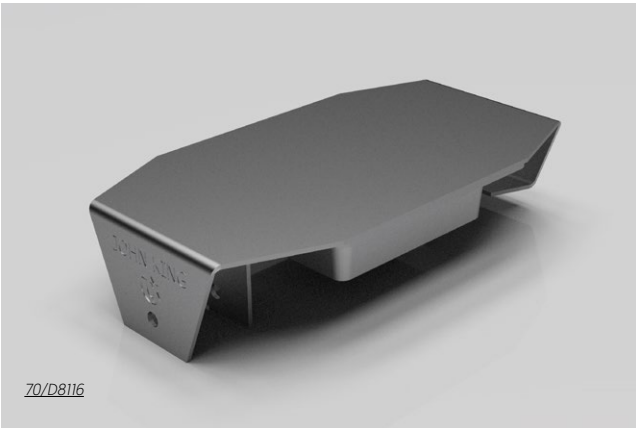
Grids and component parts manufactured to original standard and customer specification to suit all series

Pendants for Lanham.



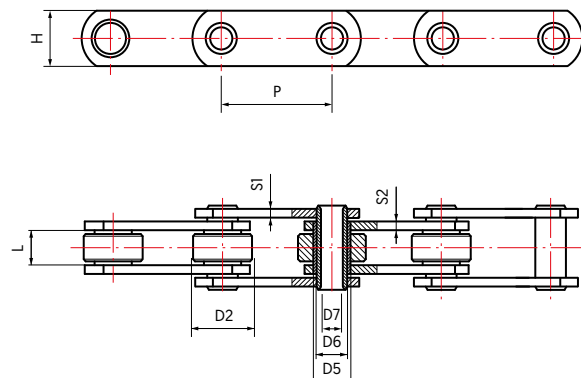
Pendants for Lanham	
Item Code	Description
72/D2414/SS	Stainless Steel – Short 63 mm Pendant
72/D2414/ZP	Zinc Plated – Short 63 mm Pendant
72/D3296/SS	Stainless Steel – Tall 68 mm Pendant
72/D3296/ZP	Zinc Plated – Tall 68 mm Pendant

Magnets.



Magnets			
Item Code	Description	Magnet type	Application
70/D8124/O	Round magnet assembly 3.20" [81.28 mm]. Casing 2.0 mm stainless steel SS430.	SM2CO5	Oven
70/D8124/P	Round magnet assembly 3.20" [81.28 mm]. Casing 2.0 mm stainless steel SS304.	Ferrite	Proofer
70/D8116/O	Rectangular magnet assembly. Casing 1.2 mm stainless steel. SS430.	SM2CO5	Oven
70/D8116/P	Rectangular magnet assembly. Casing 1.2 mm stainless steel. SS304.	Ferrite	Proofer

Proofer Chains - Hollow Pin.

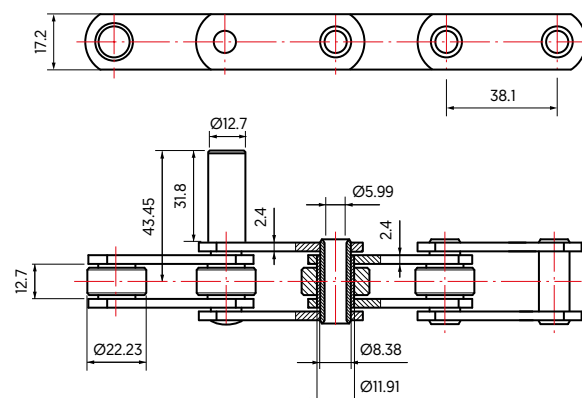
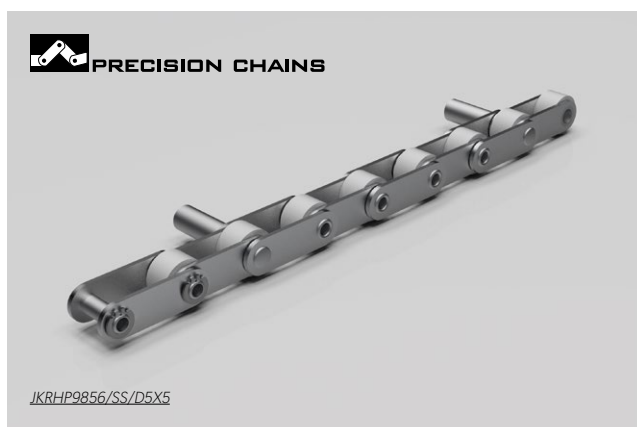


Proofer Chains Hollow Pin

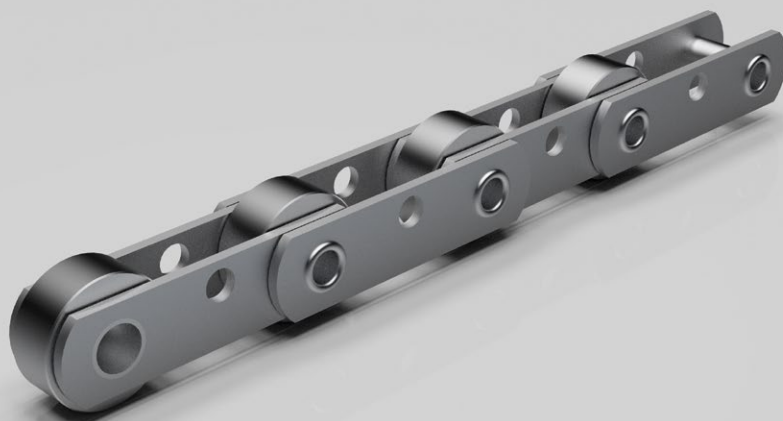
Chain Number	Pitch	Rollers	Bushings	Hollow Pins		Between Sidebars	Sidebars			Breaking Load	Average Weight	
		Outside Diameter	Diameter		Thickness		Height					
	P	D2	D5	D6	D7	L	S1	S2	H			
	mm											kN
HP55/100/P	100	47.5	23	19	11	24	5	5	40	55	110	9.5
HP110/1524/R3/P	152.4	66.7	33	26.9	20.2	26	7	5	50	110	300	10.38
HP110/1778/P	177.8	76.2	33	26.9	20.2	26	7	5	50	110	300	9
HP110/2032/P	203.2	66.7	33	26.9	20.2	26	7	5	50	110	300	8.5
HP110/2032/R3/P	203.2	76.2	33	26.9	20.2	26	7	5	50	110	300	9.2
HP160/1270/P	127	88.9	38	32	22.5	38	10	8	60	160	320	20.8
HP160/1524/P	152.4	88.9	38	32	22.5	38	10	8	60	160	320	22.1
HP160/2032/P	203.2	88.9	38	32	22.5	38	10	8	60	160	320	18.6
HP160/2032/R5/P	203.2	88.9	38	32	22.5	38	10	8	60	160	320	21.6

* Breaking Load with HT Link Plates

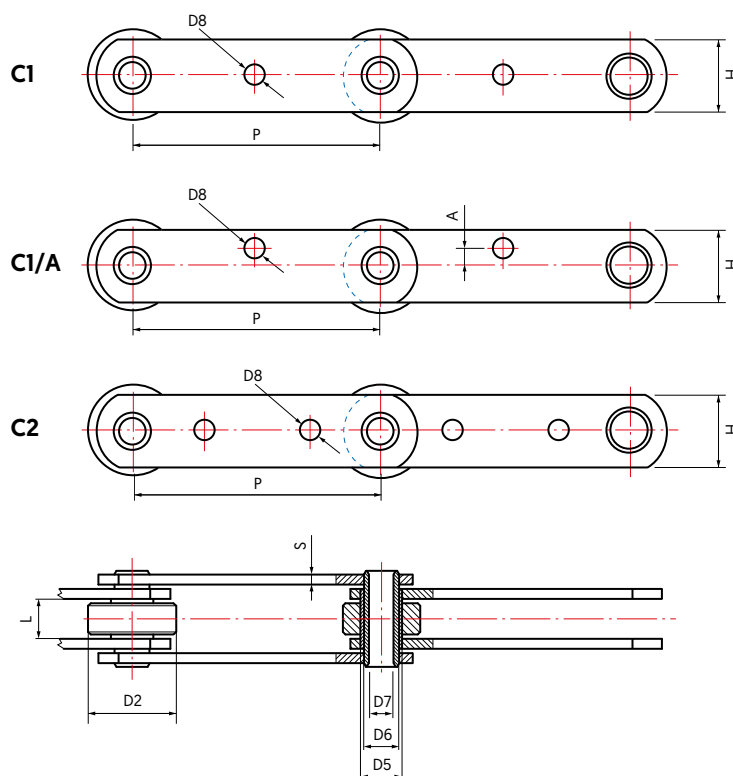
Proofer Chains - Extended Pin.



Oven Chains - Hollow Pins.



HP160/1524/C1/AX1

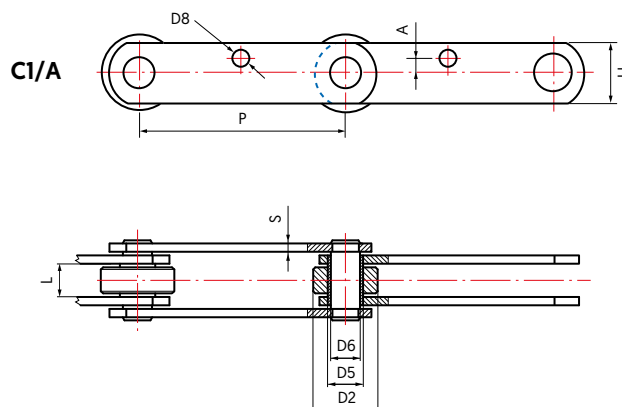


Oven Chains – Hollow Pins

Chain Number	Pitch	Rollers		Bushings	Hollow Pins		D8	A	Between Sidebars	Sidebars		Breaking Load		Average Weight
		Outside Diameter	Flange thickness	Outside Diameter	Diameter					Thickness	Height			
	P	D2		D5	D6	D7			L	S	H			
	mm											kN	kN*	kg/m
HP110/1524/C1X1/P	152.4	66.7	9	33	26.9	20.2	19.4	—	26	7	50	110	300	9.8
HP160/1524/C1/AX1/P	152.4	88.9	10.5	38	32	22.5	22.6	12.7	38	10	60	160	320	22.1
HP160/1178/C1/AX1/P	177.8	88.9	10.5	38	32	22.5	22.6	12	38	10	60	160	320	18.6

* Breaking Load with HT Link Plates

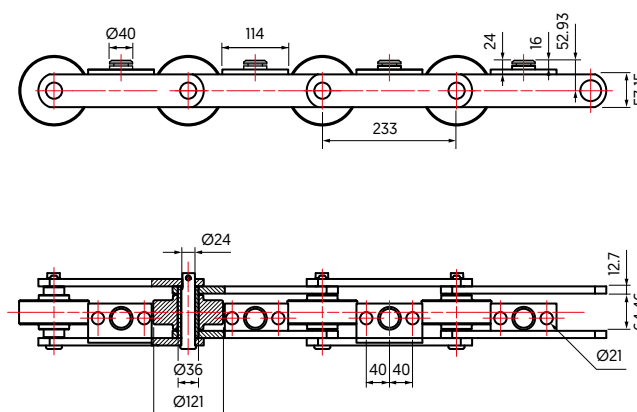
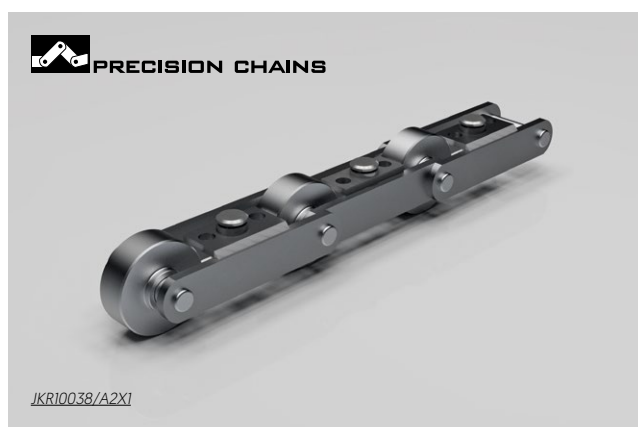
Oven Chains - Solid Pin Straight Sidebar.



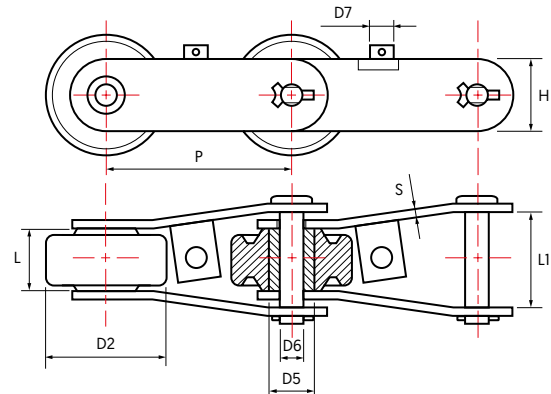
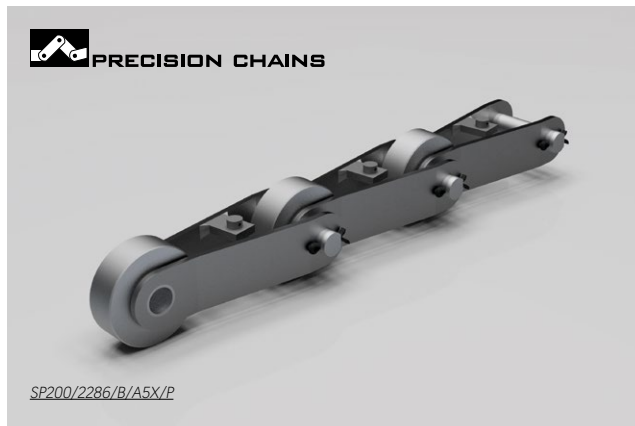
Oven Chains – Solid Pin Straight Side Bars

Chain Number	Pitch	Rollers	Bushings	Pins	D8	A	Between Sidebars	Sidebars		Breaking Load	
		Outside Diameter		Diameter				Thickness	Height		
	P	D2	D5	D6	L	S	H				
	mm							kN	kN*		
SP300/2286/C1/AX1/P	228.6	120.7	57.2	25.4	13.1 [60°]	14.3	65	8	70	300	420
SP300/2286/C1/AX1/P	228.6	120.7	57.2	25.4	14.12 [90°]	14.3	65	8	70	300	420

Oven Chains - Baker Perkins Tunnel Oven.



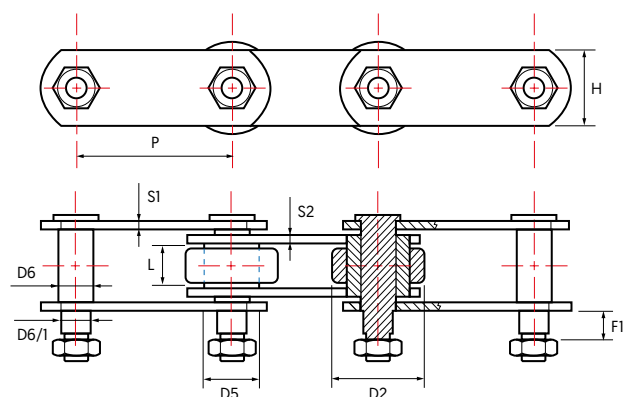
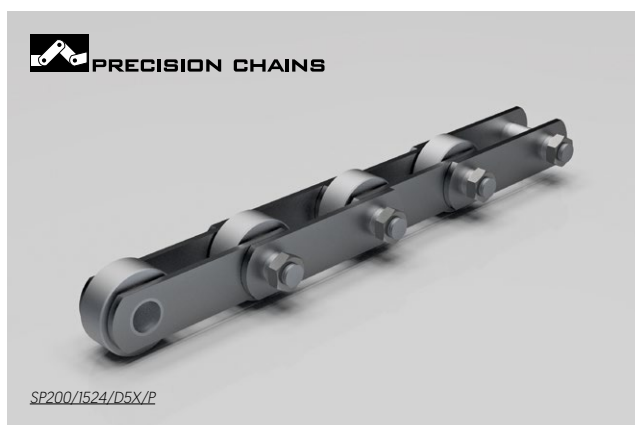
Oven Chains - Solid Pin Cranked Sidebar.



Oven Chains – Solid Pin Cranked Side Bars

Chain Number	Pitch	Rollers	Bushings	Pins	Attachment	Between Sidebars		Sidebars		Breaking Load
		Diameter	Outside Diameter	Diameter				Thickness	Height	
	P	D2	D5	D6	D7	L	L1	S	H	
	mm									
SP200/1524/B/A5X/P	152.4	120.7	38.1	31.8	19.05	44.4	90	8	70	31.8
SP200/1778/B/A5X/P	177.8	120.7	38.1	31.8	19.05	44.4	90	8	70	31.8
SP200/2286/B/A5X/P	228.6	120.7	38.1	31.8	19.05	44.4	90	8	70	31.8

Roller Chain - Extended Pins.



Roller Chain Extended Pins (Straight Sidebars)

Chain Number	Pitch	Rollers	Bushings	Pins			Thread	Between Sidebars	Sidebars			Breaking Load
		Diameter	Outside Diameter	Diameter		F1			Thickness		Height	
				D6	D6/1				S1	S2	H	
	P	D2	D5	D6	D6/1	mm						
SP200/1524/D5X/P	152.4	88.9	38.1	31.8	30	15.5	M24	39	8	8	60	200
SP200/1778/D5X/P	177.8	88.9	38.1	23	22	16.4	M24	39	10	10	60	300



Acetal Case Chains.

Link Materials.

Standard links are moulded from quality acetal engineering plastic offering optimum mechanical properties in materials handling.

The material offers a unique combination of properties, high tensile strength, excellent dynamic fatigue strength, unique resilience and practical impact strength with a low co-efficiency of friction. [0.15 against metals compared to 0.8 for steel/steel].

In operation chains are quiet, rugged and virtually maintenance free [no need for lubrication] light in weight and low on energy requirements. They offer maximum hygiene advantage and good chemical resistance with minimal moisture absorption. The material exhibits excellent resistance to wear.

Recommended temperature range: -40°C to +90°C [-40°F to +194°F].

Engineering plastics are offered in two standards.

PM

Acetal copolymer with self lubricating components. **Colour: White, grey and blue.**

LF

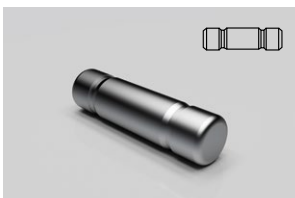
Acetal copolymer with improved self-lubricating quality. **Colour: Brown.**

In addition special grades can also be employed including glass reinforced polypropylene and polyurethane and in addition antistatic materials, but special considerations relating to application and production batches are necessary.

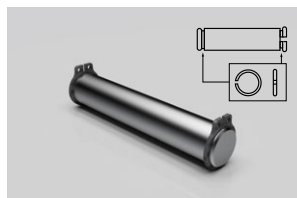
Pin Material.

Standard pin material employed is from austenitic stainless steel grade AISI 304. [18/8 Cr Ni] offering a high degree of corrosion resistance, high hardness and strength. Ferritic stainless steel can be offered if metal detection is necessary or standard steels with electrolytic zinc plating.

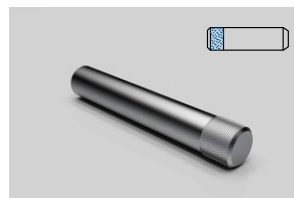
Snap in pin (S)
Standard pin



Circlip pin (C)



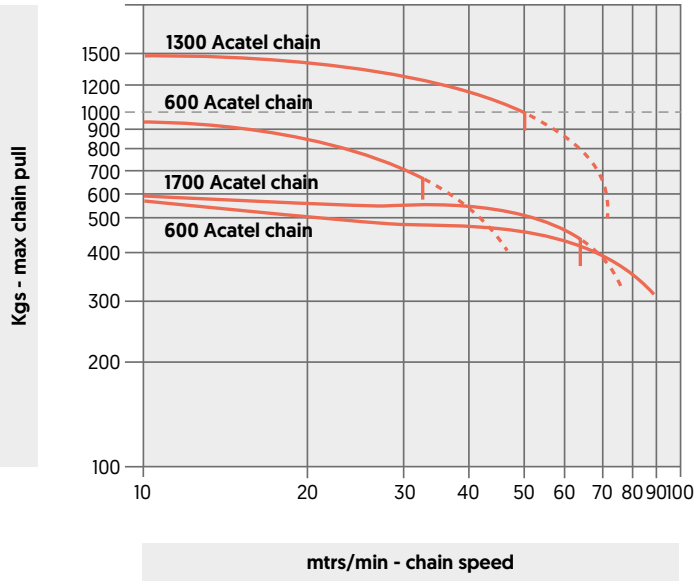
Knurled pin (K)



Rivet pin (R)



Heavy Duty Chains.



To calculate chain pull for conveyors with bends use the following table.

PM600 and PM1300 chain

Turn Angle degrees	30	45	90	180
Tf	1.2	1.4	1.5	2.0

Multiply Tf by no. of bends in conveyor length. Curves should be as far away from head shaft as possible.

When using 1700 chains with turnwheels, calculate as for straight conveyor and multiply result by 1.12n when n = no. of turns.

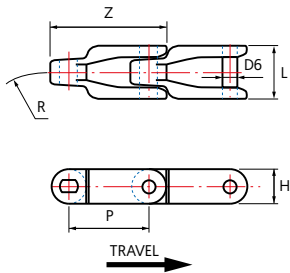
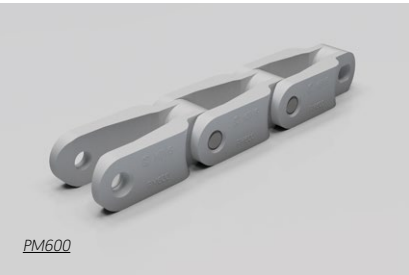
600 Series.



The popular 600 series chains are normally employed in transportation of crates & cartons.

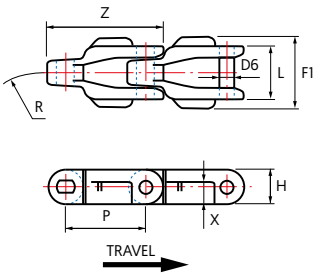
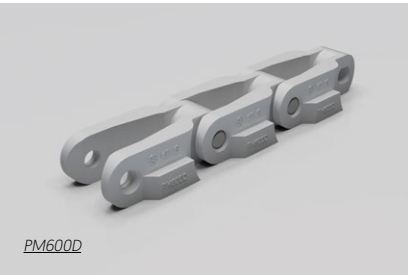
PM600

Standard open style



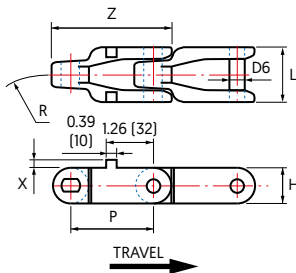
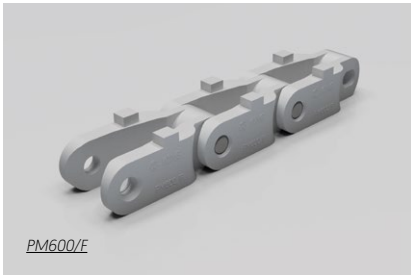
PM600D

Standard open style with hold down lug



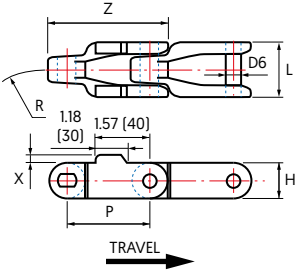
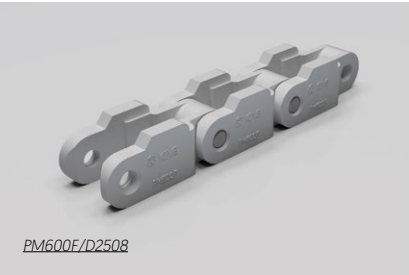
PM600/F

Standard open style with pusher attachment



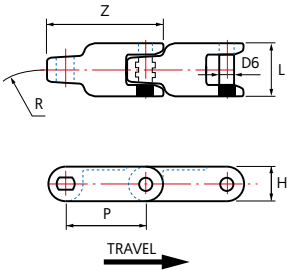
PM600F/D2508

Standard open style with
pusher attachment



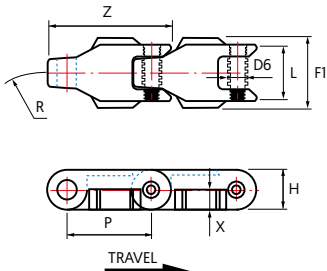
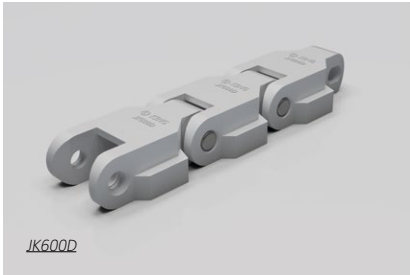
JK600

Closed top series



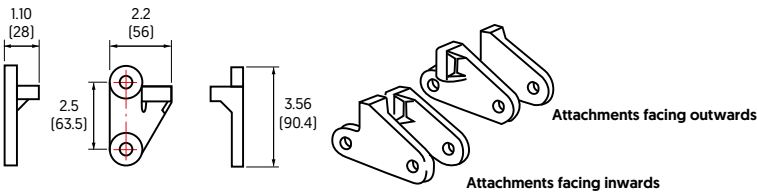
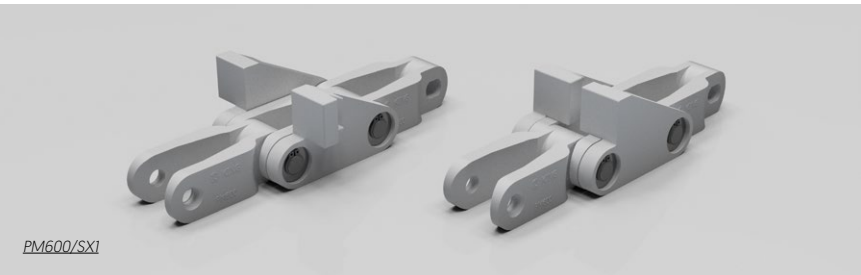
JK600D

Closed top series
with hold down lug



PM600/SX1

Standard open style with pusher attachment



Acetal Case Chains 600 Series																				
Chain Number	Pitch		Pin		Available Pin Type	Overall Length		Chain Width		Overall Width		Height		Lug Height		Minimum Radius Turn		UTS	Max Load	Average Weight
			Diameter																	
	P		D6			Z	L	F1	H	X	R	kg	kg/ft							
inches	mm	inches	mm	inches	mm	inches	mm	inches	mm	inches	mm	inches	mm	inches	mm	inches	mm	kg	kg/ft	
PM600	2.5	63.5	7/16	11	S.C.R	3.55	90.2	1.69	42.9	—	—	1.12	28.45	—	—	30	762	1540	840	0.42
PM600D	2.5	63.5	7/16	11	S.C.R	3.55	90.2	1.69	42.9	2.12	53.85	1.12	28.45	0.67	17.02	30	762	1540	840	0.44
PM600/F	2.5	63.5	7/16	11	S.C.R	3.57	90.7	1.69	42.9	—	—	1.12	28.45	0.21	5.5	30	762	1540	840	
PM600F/D2508	2.5	63.5	7/16	11	S.C.R	3.62	92.0	1.69	42.9	—	—	1.12	28.45	0.21	5.5	30	762	1540	840	
JK600	2.5	63.5	7/16	11	K	3.55	90.2	1.69	42.9	—	—	1.12	28.45	—	—	30	762	1540	840	0.42
JK600D	2.5	63.5	7/16	11	K	3.55	90.2	1.69	42.9	2.12	53.85	1.12	28.45	0.56	14.2	30	762	1540	840	0.44
CC600	2.5	63.5	7/16	11	R	3.63	92.2	1.69	42.9	—	—	1.12	28.45	—	—	21	533	5670	680	1.51
CC600D	2.5	63.5	7/16	11	R	3.63	92.2	1.69	42.9	2.12	53.85	1.12	28.45	0.56	14.2	21	533	5670	680	1.68

Pin types available: S=Snap fit, C=Clip, R=Rivet, K=Knurled

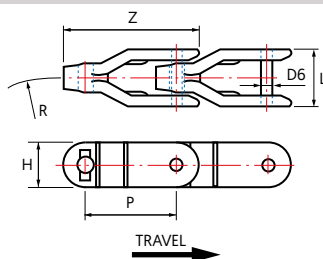
1400 Series.



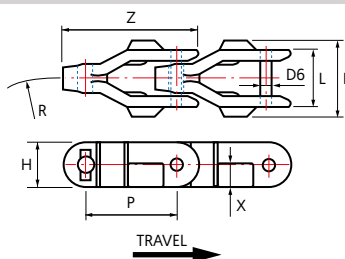
The heavy duty 1400 series with its heavier construction and increased wearing surfaces is particularly suitable for increased duty such as handling steel crates, kegs, gas cylinders, pallets and many other industrial applications.

PM1400

Standard open style

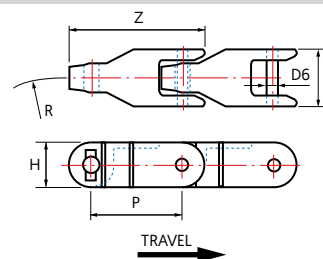
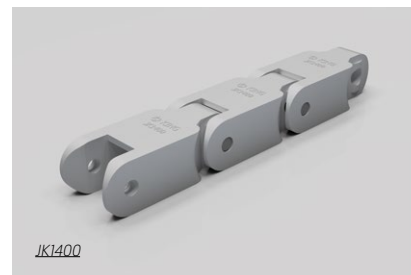


PM1400D Standard open style with hold down lug



JK1400

Closed top series

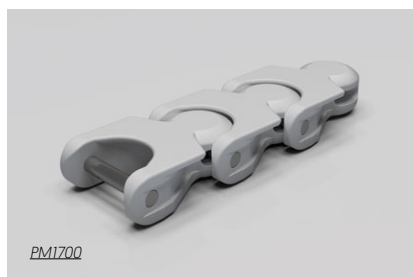


Acetal Case Chains 1400 Series

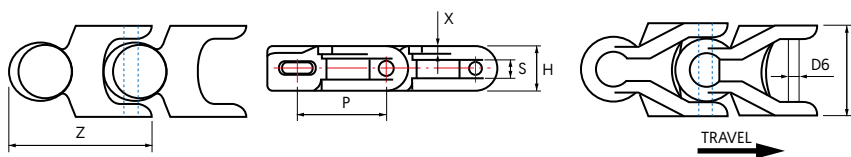
Chain Number	Pitch		Pin		Available Pin Type	Overall Length		Chain Width		Overall Width		Height		Lug Height		Minimum Radius Turn		UTS	Max Load	Average Weight
			Diameter																	
	P		D6			Z		L		F1		H		X		R				
	inches	mm	inches	mm		inches	mm	inches	mm	inches	mm	inches	mm	inches	mm	inches	mm			
PM1400	3.25	82.55	7/16	11	S.C.R	4.65	118.1	2.0	50.8	—	—	1.50	38.1	—	—	26	660	2265	1200	0.63
PM1400D	3.25	82.55	7/16	11	S.C.R	4.65	118.1	2.0	50.8	2.625	66.68	1.50	38.1	0.75	19.05	26	660	2265	1200	0.69
JK1400	3.25	82.55	7/16	11	S.C.R	4.65	118.1	2.0	50.8	—	—	1.50	38.1	—	—	26	660	2265	1200	0.67

Pin types available: S=Snap fit, C=Circclip, R=Rivet

1700 Series.



This is the most versatile chain in the series being able to flex in several directions. PM1700 can be employed on very small bends with turn discs, which makes construction of very compact conveyors possible.



Acetal Case Chains 1700 Series

Chain Type	Pitch		Pin		Available Pin Type	Overall Length		Hight		Lug Height		Side Groove Depth		Minimum Radius Turn		UTS	Max Load	Average Weight
			Diameter															
	D6		inches	mm		inches	mm	inches	mm	inches	mm	inches	mm	inches	mm			
	inches	mm																
PM1700	1.968	50	5/16	7.94	K	3.16	80.26	0.944	24	0.125	3.20	0.44	11.18	5.5	140	600	360	0.40

Pin types available: K=Knurled



Branches.

John King Chains USA Inc.

1910 Woodlands Industrial Dr,
Trussville, AL 35173, USA
Email: sales@johnkingusa.com
Phone: +1 205 593 4279

John King Chains Central Europe Sp. z o.o.

ul. Puchacza 5, Bielawy,
89-100 Nakło nad Notecią, Poland
Email: aw@johnkingchains.com
Phone: +48 600 871 077

John King Chains South Africa (Pty) Ltd.

5 Charlie Road, Jet Park,
Boksburg, 1459, South Africa
Email: sales@jkc.co.za
Phone: +27 11 894 3570

Cadenas John King Ltda.

Anibal Pinto 1249,
Concepcion, Chile
Email: manuel@johnkingchains.com
Phone: +56 2 41 221 4948

JOHN KING

Address

John King Chains Limited

New Climax Works,
Lancaster Close,
Sherburn-in-Elmet, LS25 6NS, UK

Phone & Fax

Phone: +44 1977 681 910
Fax: +44 1977 681 899

Online

Email 1: general@johnkingchains.co.uk
Email 2: sales@johnkingchains.co.uk

Website: www.johnkingchains.com