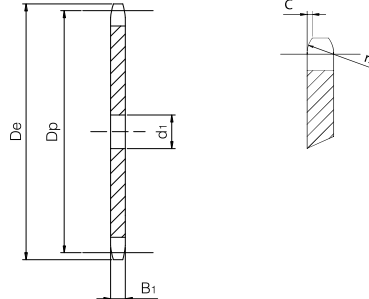


Plate wheel for chain conveyors



Pitch 50 Roller 31

PLATE WHEEL	[mm]
Tooth radius r_3	50
Radius width C	3
Tooth width B_1	13,5
CHAIN	[mm]
Pitch	50
Roller \varnothing	31



Z	D_e [mm]	D_p [mm]	d_1 [mm]	W [kg]	Part Number
6	120,0	100,00	20	0,61	QCC50R31-006
7	135,0	115,24	20	0,86	QCC50R31-007
8	150,5	130,65	20	1,16	QCC50R31-008
9	166,0	146,20	20	1,48	QCC50R31-009
10	182,0	161,80	25	1,83	QCC50R31-010
11	197,5	177,50	25	2,27	QCC50R31-011
12	213,0	193,20	25	2,72	QCC50R31-012
13	229,0	208,95	25	3,21	QCC50R31-013
14	244,5	224,70	25	3,71	QCC50R31-014
15	260,5	240,45	25	4,33	QCC50R31-015
16	276,5	256,30	30	4,94	QCC50R31-016
17	292,0	272,11	30	5,58	QCC50R31-017
18	308,0	287,95	30	6,30	QCC50R31-018
19	324,0	303,80	30	7,04	QCC50R31-019
20	339,5	319,60	30	7,82	QCC50R31-020
21	355,5	335,45	30	8,65	QCC50R31-021
22	371,5	351,35	30	9,44	QCC50R31-022
23	387,0	367,20	30	10,28	QCC50R31-023
24	403,0	383,05	30	11,25	QCC50R31-024
25	419,0	398,95	30	12,30	QCC50R31-025
26	435,0	414,80	30	13,34	QCC50R31-026
28	466,5	446,55	30	15,52	QCC50R31-028
30	498,5	478,35	30	17,95	QCC50R31-030
32	530,0	510,10	30	20,46	QCC50R31-032
38	625,5	605,45	30	26,60	QCC50R31-038

Material	Fe
D_e	External diameter
D_p	Pitch diameter
W	Weight