

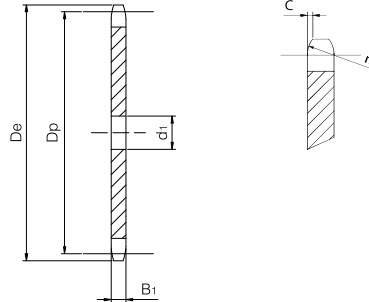
ES ELITESYSTEM® PLATE WHEELS FOR CHAIN CONVEYORS

Plate wheel for chain conveyors



Pitch 50 Roller 25

PLATE WHEEL	[mm]
Tooth radius r_3	50
Radius width C	3
Tooth width B_1	10,5
CHAIN	[mm]
Pitch	50
Roller ϕ	25



Z	D_e [mm]	D_p [mm]	d_1 [mm]	W [kg]	Part Number
6	121,0	100,00	20	0,55	QCC50R25-006
7	136,0	115,24	20	0,76	QCC50R25-007
8	151,5	130,65	20	0,92	QCC50R25-008
9	167,0	146,20	20	1,15	QCC50R25-009
10	183,0	161,80	25	1,52	QCC50R25-010
11	198,5	177,50	25	1,86	QCC50R25-011
12	214,0	193,20	25	2,20	QCC50R25-012
13	230,0	208,95	25	2,56	QCC50R25-013
14	245,5	224,70	25	2,99	QCC50R25-014
15	261,5	240,45	25	3,40	QCC50R25-015
16	277,5	256,30	30	3,94	QCC50R25-016
17	293,0	272,11	30	4,73	QCC50R25-017
18	309,0	287,95	30	4,94	QCC50R25-018
19	325,0	303,80	30	6,00	QCC50R25-019
20	340,5	319,60	30	6,10	QCC50R25-020
21	356,5	335,45	30	7,39	QCC50R25-021
22	372,5	351,35	30	7,88	QCC50R25-022
23	388,0	367,20	30	8,15	QCC50R25-023
24	404,0	383,05	30	8,68	QCC50R25-024
25	420,0	398,95	30	9,66	QCC50R25-025
28	467,5	446,55	30	13,15	QCC50R25-028
30	499,5	478,35	30	14,82	QCC50R25-030
35	579,0	557,80	30	19,10	QCC50R25-035
38	626,5	605,45	30	21,50	QCC50R25-038

Material	Fe
D_e	External diameter
D_p	Pitch diameter
W	Weight