

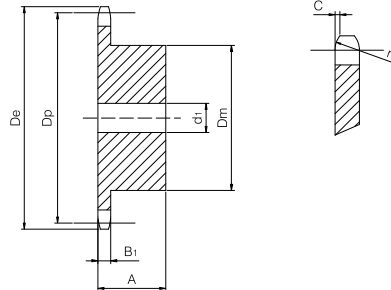
# ASA simplex sprocket

for chain according to DIN 8188 - ISO 606 - ANSI B 29.1



## ASA 60-1 Pitch 19,05 x 12,7 mm

SPROCKET	[mm]
Tooth radius $r_3$	20
Radius width C	2,4
Tooth width $B_1$	11,6
CHAIN	[mm]
Pitch	19,05
Internal width	12,7
Roller $\phi$	11,91



Z	$D_e$ [mm]	$D_p$ [mm]	$D_m$ [mm]	$d_1$ [mm]	A [mm]	W [kg]	Part number
10	70,0	61,64	42	12	30	0,38	QPSA60-1-010
11	76,0	67,61	46	16	35	0,50	QPSA60-1-011
12	81,9	73,60	52	16	35	0,64	QPSA60-1-012
13	87,9	79,59	58	16	35	0,80	QPSA60-1-013
14	94,0	85,61	64	16	35	0,97	QPSA60-1-014
15	100,0	91,63	70	16	35	1,16	QPSA60-1-015
16	106,0	97,65	75	16	35	1,34	QPSA60-1-016
17	112,0	103,67	80	16	35	1,53	QPSA60-1-017
18	118,0	109,71	80	16	35	1,61	QPSA60-1-018
19	124,1	115,75	80	16	35	1,70	QPSA60-1-019
20	130,1	121,78	80	16	35	1,84	QPSA60-1-020
21	136,2	127,82	90	20	40	2,35	QPSA60-1-021
22	142,2	133,86	90	20	40	2,45	QPSA60-1-022
23	148,2	139,90	90	20	40	2,56	QPSA60-1-023
24	154,3	145,94	90	20	40	2,67	QPSA60-1-024
25	160,3	152,00	90	20	40	2,79	QPSA60-1-025
26	166,4	158,04	95	20	40	3,08	QPSA60-1-026
27	172,4	164,09	95	20	40	3,21	QPSA60-1-027
28	178,5	170,13	95	20	40	3,34	QPSA60-1-028
30	190,6	182,25	95	20	40	3,62	QPSA60-1-030
32	202,7	194,35	95	20	40	3,92	QPSA60-1-032
35	220,9	212,52	95	20	40	4,41	QPSA60-1-035
38	239,0	230,69	100	20	40	5,07	QPSA60-1-038
40	251,1	242,81	100	20	40	5,45	QPSA60-1-040

Material	Steel C45
$D_e$	External diameter
$D_p$	Pitch diameter
$D_m$	Hub diameter
W	Weight

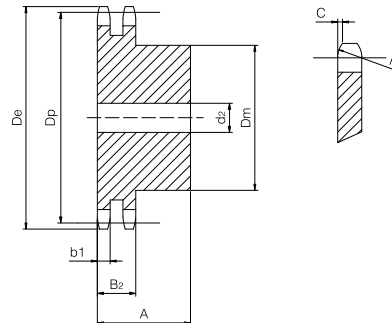
## ASA duplex sprocket

for chain according to DIN 8188 - ISO 606 - ANSI B 29.1



### ASA 60-2 Pitch 19,05 x 12,7 mm

SPROCKET	[mm]
Tooth radius $r_3$	20
Radius width C	2,4
Tooth width $b_1$	11,3
Tooth width $B_2$	34,1
CHAIN	[mm]
Pitch	19,05
Internal width	12,7
Roller $\varnothing$	11,91



Z	$D_e$ [mm]	$D_p$ [mm]	$D_m$ [mm]	$d_2$ [mm]	A [mm]	W [kg]	Part number
10	70,0	61,64	42	16	45	0,58	QPDA60-2-010
11	76,0	67,61	47	16	50	0,80	QPDA60-2-011
12	81,9	73,60	53	16	50	1,01	QPDA60-2-012
13	87,9	79,59	59	16	50	1,24	QPDA60-2-013
14	94,0	85,61	65	16	50	1,45	QPDA60-2-014
15	100,0	91,63	71	16	50	1,73	QPDA60-2-015
16	106,0	97,65	77	20	50	2,03	QPDA60-2-016
17	112,0	103,67	83	20	50	2,35	QPDA60-2-017
18	118,0	109,71	89	20	50	2,70	QPDA60-2-018
19	124,1	115,75	95	20	50	3,06	QPDA60-2-019
20	130,1	121,78	100	20	50	3,45	QPDA60-2-020
21	136,2	127,82	100	20	50	3,69	QPDA60-2-021
22	142,2	133,86	100	20	50	3,96	QPDA60-2-022
23	148,2	139,90	110	20	50	4,50	QPDA60-2-023
24	154,3	145,94	110	20	50	4,81	QPDA60-2-024
25	160,3	152,00	120	20	50	5,40	QPDA60-2-025
26	166,4	158,04	120	20	50	5,73	QPDA60-2-026
28	178,5	170,13	120	20	50	6,43	QPDA60-2-028
30	190,6	182,25	120	20	50	7,18	QPDA60-2-030

Material	Steel C45
$D_e$	External diameter
$D_p$	Pitch diameter
$D_m$	Hub diameter
W	Weight