

ES ELITESYSTEM® SIMPLEX SPROCKETS FOR SER-SIT® TAPER BUSHING

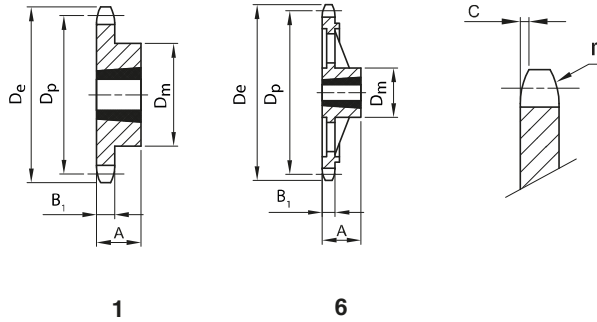


Simplex sprocket for SER-SIT® taper bushing

for chain according to DIN 8187 - ISO/R 606

ISO 06B-1 Pitch 3/8" x 7/32"

SPROCKET	[mm]
Tooth radius r_3	10
Radius width C	1
Tooth width B_1	5,3
CHAIN	[mm]
Pitch	9,525
Internal width	5,72
Roller ϕ	6,35



Z	De [mm]	Dp [mm]	Dm [mm]	A [mm]	SER-SIT® taper bushing	Fig.	W [kg]	Part Number
17	55,5	51,83	45	22	1008	1	0,11	QPBS06B1-017
18	58,6	54,85	45	22	1008	1	0,14	QPBS06B1-018
19	61,6	57,86	45	22	1008	1	0,15	QPBS06B1-019
20	64,6	60,89	46	22	1008	1	0,16	QPBS06B1-020
21	67,6	63,90	46	22	1008	1	0,18	QPBS06B1-021
22	70,6	66,93	55	22	1108	1	0,25	QPBS06B1-022
23	73,7	69,95	63	25	1210	1	0,27	QPBS06B1-023
24	76,7	72,97	63	25	1210	1	0,30	QPBS06B1-024
25	79,7	75,99	63	25	1210	1	0,32	QPBS06B1-025
26	82,7	79,02	63	25	1210	1	0,33	QPBS06B1-026
27	85,7	82,04	63	25	1210	1	0,34	QPBS06B1-027
28	88,8	85,07	63	25	1210	1	0,37	QPBS06B1-028
30	94,8	91,12	63	25	1210	1	0,39	QPBS06B1-030
38	119,0	115,34	70	25	1210	1	0,65	QPBS06B1-038
45	141,1	136,54	70	25	1210	1	1,01	QPBS06B1-045
57*	177,5	172,91	83	25	1210	6	1,34	QPBS06B1-057
76*	235,1	230,49	83	25	1210	6	1,84	QPBS06B1-076

Material	Steel C45
	*Cast Iron EN-GJL-200
De	External diameter
Dp	Pitch diameter
Dm	Hub diameter
W	Weight

ES ELITESYSTEM® DUPLEX SPROCKETS FOR SER-SIT® TAPER BUSHING

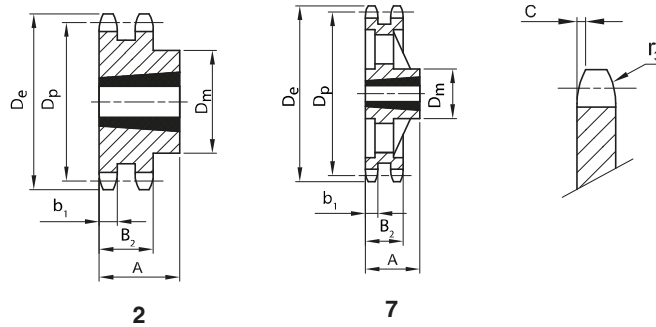


Duplex sprocket for SER-SIT® taper bushing

for chain according to DIN 8187 - ISO/R 606

ISO 06B-2 Pitch 3/8" x 7/32"

SPROCKET	[mm]
Tooth radius r_3	10
Radius width C	1
Tooth width b_1	5,2
Tooth width B_2	15,4
CHAIN	[mm]
Pitch	9,525
Internal width	5,72
Roller ϕ	6,35



Z	De [mm]	Dp [mm]	Dm [mm]	A [mm]	SER-SIT® taper bushing	Fig.	W [kg]	Part Number
17	55,5	51,83	41	22	1008	2	0,11	QPBD06B2-017
18	58,6	54,85	43	22	1008	2	0,15	QPBD06B2-018
19	61,6	57,86	46	22	1008	2	0,18	QPBD06B2-019
20	64,6	60,89	48	22	1008	2	0,22	QPBD06B2-020
21	67,6	63,90	49	22	1008	2	0,16	QPBD06B2-021
22	70,6	66,93	52	22	1108	2	0,28	QPBD06B2-022
23	73,7	69,95	59	25	1210	2	0,27	QPBD06B2-023
24	76,7	72,97	61	25	1210	2	0,32	QPBD06B2-024
25	79,7	75,99	64	25	1210	2	0,37	QPBD06B2-025
26	82,7	79,02	65	25	1210	2	0,44	QPBD06B2-026
27	85,7	82,04	70	25	1210	2	0,50	QPBD06B2-027
28	88,8	85,07	70	25	1210	2	0,57	QPBD06B2-028
30	94,8	91,12	75	25	1210	2	0,68	QPBD06B2-030
38	119,0	115,34	80	25	1610	2	1,03	QPBD06B2-038
57*	177,5	172,91	90	25	1610	7	1,16	QPBD06B2-057
76*	235,1	230,49	90	25	1610	7	2,19	QPBD06B2-076

Material	Steel C45
	*Cast Iron EN-GJL-200
De	External diameter
Dp	Pitch diameter
Dm	Hub diameter
W	Weight

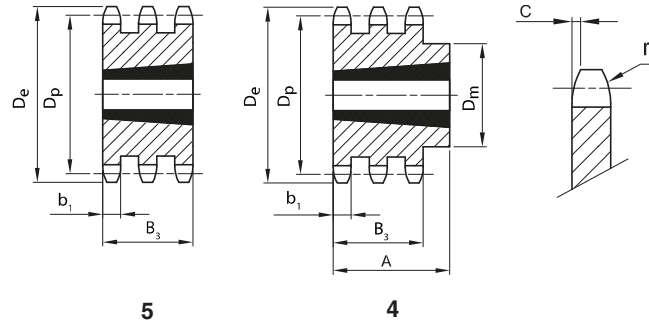
ES ELITESYSTEM® TRIPLEX SPROCKETS FOR SER-SIT® TAPER BUSHING



Triplex sprocket for SER-SIT® taper bushing for chain according to DIN 8187 - ISO/R 606

ISO 06B-3 Pitch 3/8" x 7/32"

SPROCKET	[mm]
Tooth radius r_3	10
Radius width C	1
Tooth width b_1	5,2
Tooth width B_3	25,6
CHAIN	[mm]
Pitch	9,525
Internal width	5,72
Roller \varnothing	6,35



Z	De [mm]	Dp [mm]	Dm [mm]	A [mm]	SER-SIT® taper bushing	Fig.	W [kg]	Part Number
17	55,5	51,83	-	25,6	1008	5	0,15	QPBT06B3-017
19	61,6	57,86	-	25,6	1008	5	0,24	QPBT06B3-019
21	67,6	63,90	-	25,6	1008	5	0,34	QPBT06B3-021
23	73,7	69,95	-	25,6	1210	5	0,30	QPBT06B3-023
25	79,7	75,99	-	25,6	1210	5	0,41	QPBT06B3-025
27	85,7	82,04	-	25,6	1210	5	0,55	QPBT06B3-027
30	94,8	91,12	79	38,0	1615	4	0,88	QPBT06B3-030
38	119,0	115,34	90	38,0	1615	4	1,75	QPBT06B3-038

Material	Steel C45
De	External diameter
Dp	Pitch diameter
Dm	Hub diameter
W	Weight

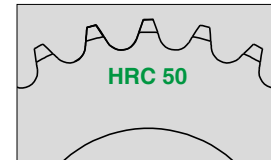
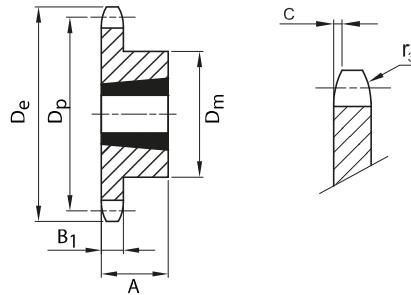
ES ELITESYSTEM® SIMPLEX SPROCKETS FOR SER-SIT® TAPER BUSHES HARDENED TEETH



Simplex sprocket for SER-SIT® taper bushes hardened teeth
for chain according to DIN 8187 - ISO/R 606

ISO 06B-1
Pitch 3/8" x 7/32"

SPROCKET	[mm]
Tooth radius r_3	10
Radius width C	1
Tooth width B_1	5,3
CHAIN	[mm]
Pitch	9,525
Internal width	5,72
Roller \varnothing	6,35



Z	D_e [mm]	D_p [mm]	D_m [mm]	A [mm]	SER-SIT® taper bushing	W [kg]	Part Number
17	55,5	51,83	45	22	1008	0,11	QPBHS06B1-017
19	61,6	57,86	45	22	1008	0,15	QPBHS06B1-019
21	67,6	63,90	46	22	1008	0,18	QPBHS06B1-021
23	73,7	69,95	63	25	1210	0,27	QPBHS06B1-023
25	79,7	75,99	63	25	1210	0,32	QPBHS06B1-025
27	85,7	82,04	63	25	1210	0,34	QPBHS06B1-027
30	94,8	91,12	63	25	1210	0,39	QPBHS06B1-030

Material	Steel C45
D_e	External diameter
D_p	Pitch diameter
D_m	Hub diameter
W	Weight

ISO hardened simplex sprockets for bushing