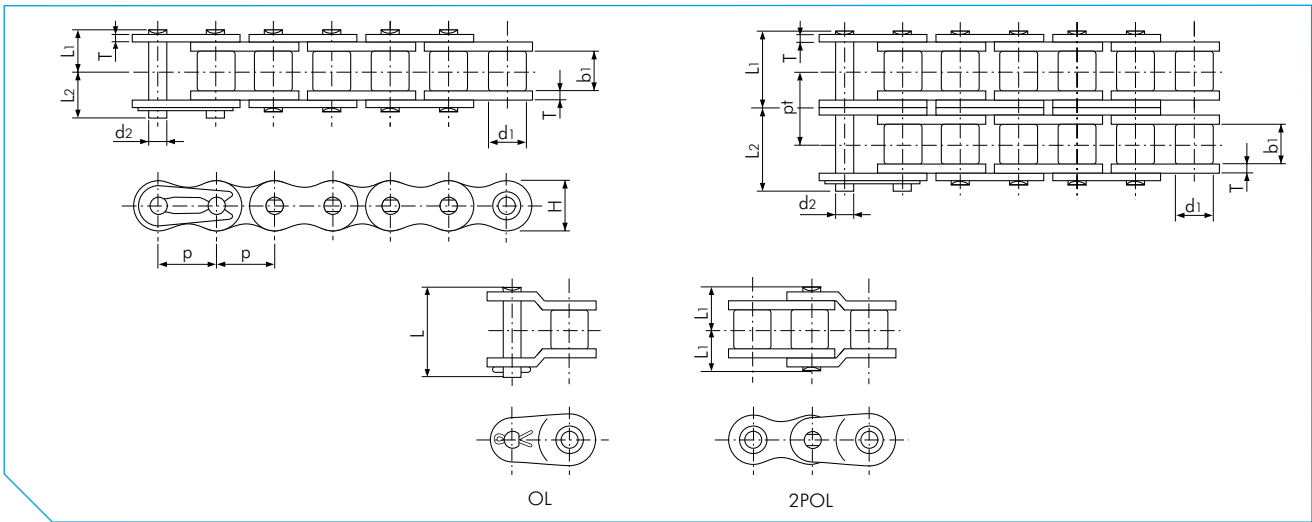


ANSI CHAIN FOR CORROSIVE ENVIRONMENTS



ANSI SS Chain

Dimensions in mm

TSUBAKI Chain No.	Pitch p	Roller Diameter d1	Inner Width b1	Pin			Link Plate		Transverse Pitch pt	Max. Allowable Load acc. to Tsubaki kN	Approx. Mass kg/m	
				Diameter d2	Length L1	Length L2	Length L	Thickness T				Height H (max)
RS11-SS-1	3.7465 (-)	2.285	1.83	1.57	2.275	3.165	-	0.38	3.50	-	0.05	0.052
RS25-SS-1	6.35 (1/4")	3.30	3.18	2.31	3.80	4.80	-	0.75	5.84	-	0.12	0.14
RS35-SS-1	9.525 (3/8")	5.08	4.78	3.59	5.85	6.85	14.70	1.25	9.00	-	0.26	0.33
RS35-SS-2					11.05	11.95	24.60					
RS40-SS-1	12.70 (1/2")	7.92	7.95	3.97	8.25	9.95	18.60	1.50	12.00	-	0.44	0.64
RS40-SS-2					15.45	17.15	33.50					
RS50-SS-1	15.875 (5/8")	10.16	9.53	5.09	10.30	12.00	23.90	2.00	15.00	-	0.69	1.04
RS50-SS-2					19.35	21.15	41.80					
RS60-SS-1	19.05 (3/4")	11.91	12.70	5.96	12.85	14.75	29.40	2.40	18.10	-	1.03	1.53
RS60-SS-2					24.25	26.25	52.60					
RS80-SS-1	25.40 (1")	15.88	15.88	7.94	16.25	19.25	39.00	3.20	24.10	-	1.77	2.66
RS80-SS-2					30.90	33.90	68.05					
RS100-SS-1	31.75 (1 1/4")	19.05	19.05	9.54	19.75	22.85	46.50	4.00	30.10	-	2.55	4.01
RS100-SS-2					37.70	40.80	81.60					

Note:

1. RS11-SS to RS35-SS are rollerless chain (only bush). The figure shown is the bush diameter.
2. Connecting links are clip type for sizes RS11-SS to RS60-SS, and cotter type for sizes RS80-SS to RS100-SS.
3. The rivet-type for single-strand and multi-strand chain above RS80-SS is quad-rivet.
4. For details on corrosion resistance selection, please consult our Corrosion Resistance Guide in this catalogue.