

# SECTION EIGHT

**Circular knives  
Straight blades**

# All Machines Circular Knives



Sizes	Partnumber OEM
60x22x2 SB	4R 587 861
63x40x1	
80x25/30x2 SB	4M 647 057
90x40x2 SB	
100x22,2x2 SB	FB.84.003
100x25/30x2 DB	4M 629 326
100x25/30x2 SB CB	
100x25/30x2 DB 4SL	
110x25/30x2 SB CB	
110x25/30x2 SB CB 4SL	4M.629.925
110x25/30x2 DB 4SL	
110x32x2 SB	0990.IDC0.053.00
110x32x2 DB	
120x22x2 SB K	4R 438 394
125x22,2x1,5 SB	
125x22,2x2SB	08.24.000.000
125x25/30x2SB	4R.509.406
125x25/30x3 B 8SL 2G	4R 581 196
125x32x2 SB	
130x32x2 DB	
150x22,2x2 DB	
150x32x2 DB	
155x25/30x2 SB	4M 636 629
160x25/30x2 SB 4SL	4R 539 859
160x25/30x2 DB	

Sizes	Partnumber OEM
160x32x2 DB	
160x32x2 DB 6SL	
165x25/30x2	
165x25/30x2 DB 4SL	4G.518.391
165x40x2,5 SB	WTC.1028
170x32x2 DB	0990.IDC0.003.00
170x32x2 DB 8SL 1G	
175x25/30x2 SB	4R 507 971
175x25/30x2 4SL	4R 518 391
175x25/30x2 SB CB 8SL	4M.622.400
175x32x2 SB 6SL	0990.IDC0.007.00
175x32x2 DB	
175x32x2 SB	0990.IDC0.002.00
178x22x2 DB 6SL	CB.13.168
180x32x2 SB	
178x22,2x1,5 DB	
178x25/30x2 SB 6SL	
180x32x2 SB	
185x22x2 DB	
185x32x2 DB 6SL	
192x25/30x2	3R.554.010
200x25/30x2 DB	
200x25/30x2 DB 4SL	
200x25/30x2 DB 24SL	
200x25/30x2 SB	507.559

CB = Counter Bevel, DB = Double Bevel, LB = Leading Bevel, SB = Single Bevel, T = Toothed, K = Keyway, SL = Slots

**We supply all kinds of blades according to your specification**

# All Machines Circular Knives (continued)



Sizes	Partnumber OEM	Sizes	Partnumber OEM
200x32x2 DB 6 sl.	912002003	300x25/30x3 SB	4R 539 843
200x32x2 SB		300x25/30x3 DB	4R 501 497
200x32x2 DB	0990.IDC0.001.00	350x32x3 DB	
200x32x2 T200		400x32x2,5 DB 1H	0990.IDC0.013.00
200x32x2,5 DB			
210x32x2 SB			
210x32x2 DB			
230x32x2 DB			
230x32x2 DB 52SL			
240x32x2 DB			
250x32x2,5 T250			
250x32x3 DB 12 sl.	0990.IDC0.021.00		
250x32x2,5 T160			
250x54x17	0990.IDC2.002.00		
250x61x2 SB 2H	4R.534.105		
265x32x2 DB 6SL 1H			
270x32x3 DB			
270x40x2,4 DB			
270x40x3 DB			
275x40x3 DB			
295x40x3			
295x44,5x3 DB			
300x32x2,5 DB	0990.IDC0.010.00		
300x32x3 SB			
300x32x3 SB 8SL 2H			

CB = Counter Bevel, DB = Double Bevel, LB = Leading Bevel, SB = Single Bevel, T = Toothed, K = Keyway, SL = Slots

**We supply all kinds of blades according to your specification**

# Circular knife With Widea inserts



Rodon Int. nr:	Description:	Partnr.OEM:	Pos. nr:
CB.160.32.006	Circular blade 160x32x2 Hard metal inserts	91 200 1607	
CB.175.22.002	Circular blade 175x22,2x2 DB 75 Widia inserts	0990.IDC0.050.00	

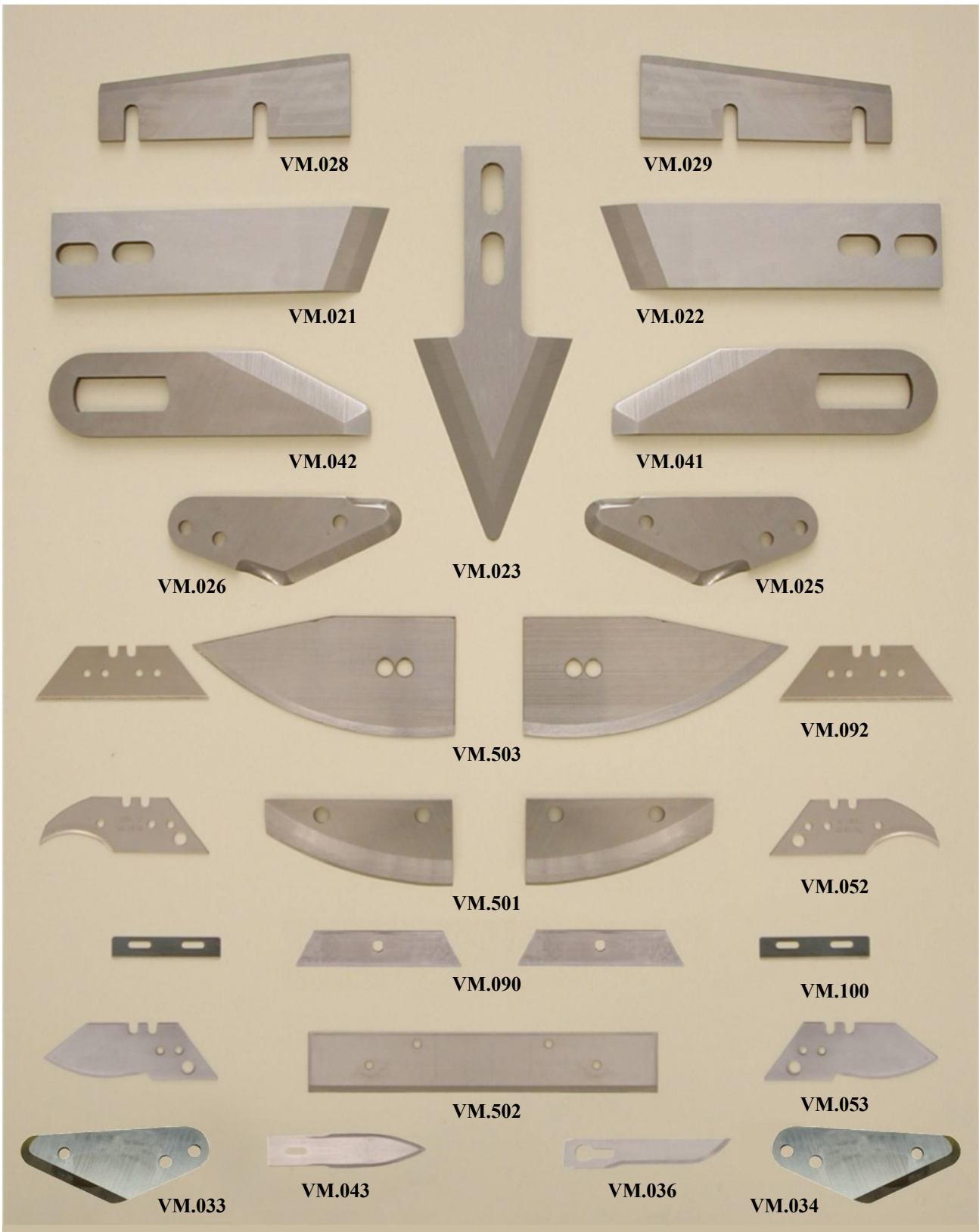


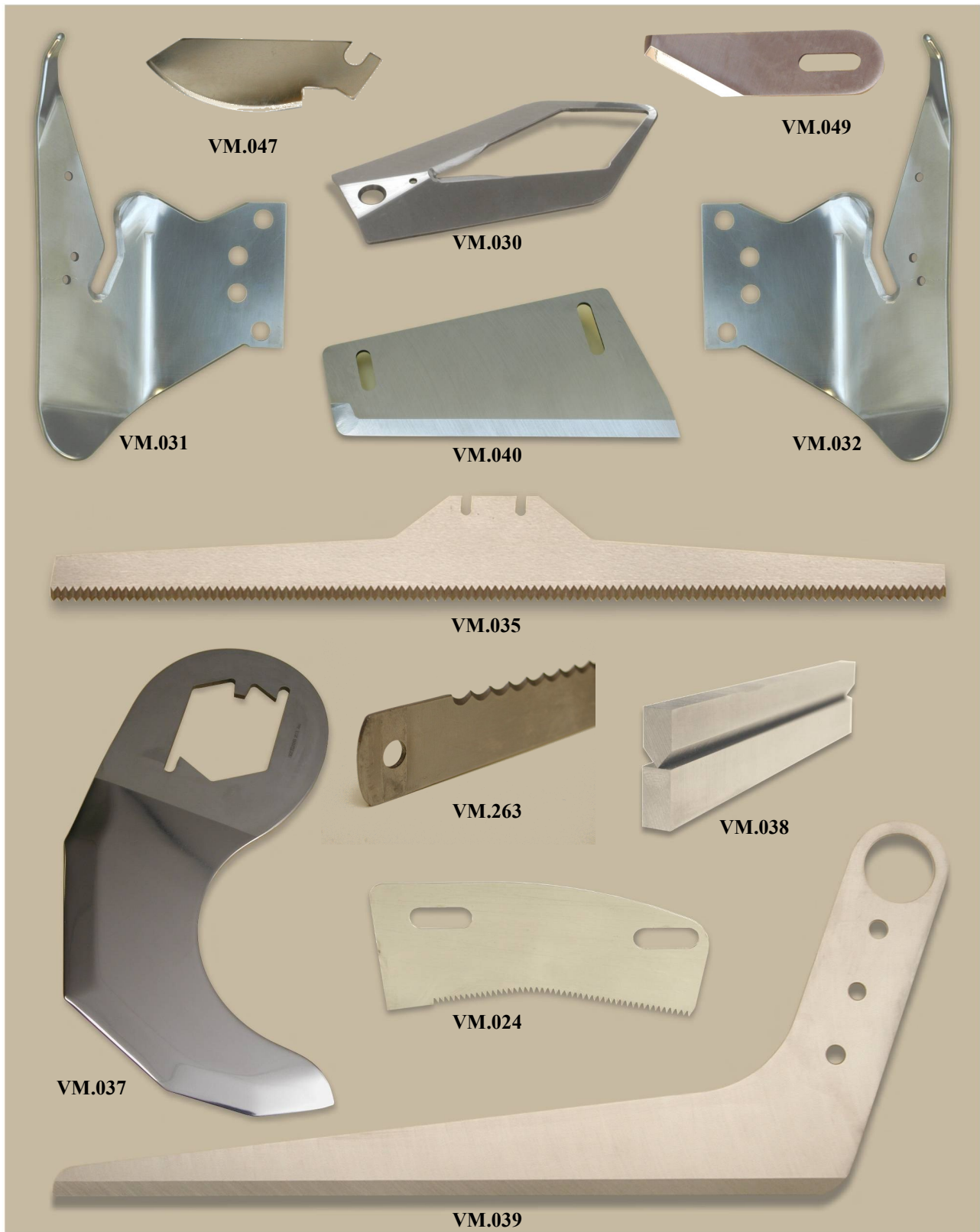
# All machines

## Flat blades



Rodon Partnr:	Description:	Partnr.OEM:	Pos.nr:
VM.021	Wishbone knife L.H.	4M 622 226	
VM.022	Wishbone knife R.H.	4M 622 227	
VM.023	Arrow knife filletting machine	3M 636 742	
VM.024	Toothed straight knife	3R 538 478	
VM.025	Oval shape straight knife L.H.	3R 536 623/4M 608 789	
VM.026	Oval shape straight knife R.H.	3R 526 624/4M 608 780	
VM.028	Flat knife Stork wingcutter	4M 617 359	
VM.029	Flat knife Stork wingcutter	4M 617 360	
VM.030	V-shape knife Stork Tailcutter	636.635/534.031	
VM.031	Special knife Strok Wingcutter right	1R.596.971	
VM.032	Special knife Strok Wingcutter left	1R.596.970	
VM.033	Oval shape knife right	4R.544.550	
VM.034	Oval shape knife left	4R.544.657	
VM.035	Toothed knife 400x50x2,4mm SB Vega 0001	2TP1.01ID.014	
VM.036	Flat knife 04	09.1400.457	
VM.037	Flat knife Seydelmann cutter 2001 4EE	2001.4EE	
VM.038	Set of flat knives for Katzenstein		
VM.039	Formingblade Marel L=340	54.0910.359	
VM.040	Flat knife Stork Wingcutter 2nd joint	4M.600.326	
VM.041	Flat knife Stork filletting machine left DB	390.655	
VM.042	Flat knife Stork filletting machine right DB	390.656	
VM.043	Flat knife # 623		
VM.047	Flat knife 74x24x0,7 DB		
VM.049	Flat knife Stork filletting machine right DB	666.118 B	
VM.052	Opener blade Meyn concave old style	89.5080.207.0001 – 99.24920	98
VM.053	Filletting blade Meyn	89.5080.207.0003	
VM.090	Opener blade Stork	09 1400 454	1600
VM.092	Opener & backstripcutter blade	89.5080.207.0007 – 99.24921	98
VM.100	Pre-cutter blade wingtipcutter Meyn	89.5080.207.0004	
VM.263	Flat blade 263x21 (HOLAC)	02-1134-0	
VM.501	Thighknife set (L+R) type I	0990.IDC1.004/5.00	
VM.502	Thighknife type II, precutterknife	0162.0002.057.00	
VM.503	Openerknife special Spain		





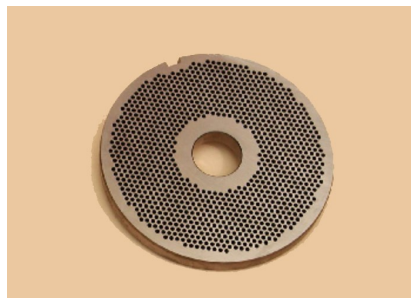
# Laska Grinder Knives/Plates



Rodon Int. nr:	Description:	Partnr.OEM:	Pos.nr:
Las.160.001	Plate-G160-20		
Las.160.002	Plate-G160-3		
Las.160.003	4 Claw bracket		
Las.160.004	5 Claw bracket		
Las 160.005	Blade		
Las.160.006	Supporting star		
Las.160.007	Wormring incl. lockplate		
Las.160.008	Plate-G160-13		
Las.160.009	Plate-G160-7.8		
Las.160.010	Plate-G160-6		
Las.160.011	Plate-G160-4		
Las.160.012	Plate-G160-2		
Las.160.013	Spacer ring		
Las.160.014	Plate-G160-10		
Las.160.015	Precutter-G160-42		



Las.160.001



Las.160.002



Las.160.003



Las.160.004



Las.160.005



Las.160.006



# Diaphragm knife Forming Machine compatible with Stork



Rodon Int. nr:	Description:	Partnr.OEM:	Pos.nr:
VM.054	Diaphragm knife		
VM.064	Diaphragm knife new style		
FM.20.001	Base plate		
FM.20.002	Rotation plate		
FM.20.003	Synthetic cover		
FM.20.500	Diaphragm head complete		



FM.20.500



FM.20.001



VM.054



FM.20.003



FM.20.002