

SECTION THREE

**Spare parts for: Gizzard Harvesters
and Control Tables**

Gizzard Harvester compatible with Meyn
 (CD6000 and CD8000)
 Set peelershafts including bushings



Rodon Int. nr:	Description:	Partnr.OEM:	Pos.nr:
GH.10.500	Set peelershafts (6000+8000 upper set)	0125.0001.000.90	20/23
GH.10.503	Set peelershafts (8000 lower set)	0125.0025.000.91	20/23
GH.10.518	Set peelershafts (upper set) high yield	0125.0001.000.99	20/23
GH.10.519	Set peelershafts (lower set) high yield	0125.0001.000.91	20/23



Gizzard Harvester compatible with Meyn
(CD6000 and CD8000)
Set Pinch-off rolls



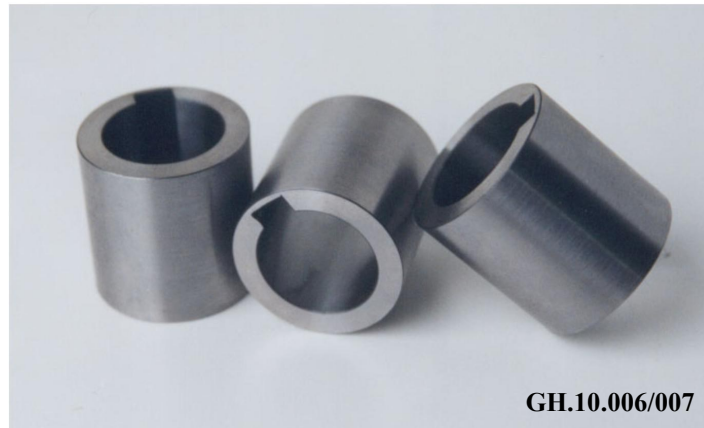
Rodon Int. nr:	Description:	Partnr.OEM:	Pos.nr:
GH.10.501	Pinch-off rolls Z=26	0990.IDA0.000.22	55/56
GH.10.514	Pinch-off rolls Z=20	0990.IDA0.000.21	55/56
GH.10.515	Pinch-off rolls Z=16	0990.IDA0.000.20	55/56



Gizzard Harvester compatible with Meyn Bushings /Rings



Rodon Int. nr:	Description:	Partnr.OEM:	Pos.nr:
GH.10.006	Wearbushing D=36 (old type)	0990.A209.002.00 – 125.01.014	54
GH.10.007	Wearbushing D=35 (new type)	0125.0002.014.00 – 125.02.014	222/8
GH.10.008	Compression ring	0125.0002.381.00 – 125.02.381	223/13
LBK36/45x36	Collar bearing bushing	89.0663.045.0001 – 99.22669	53



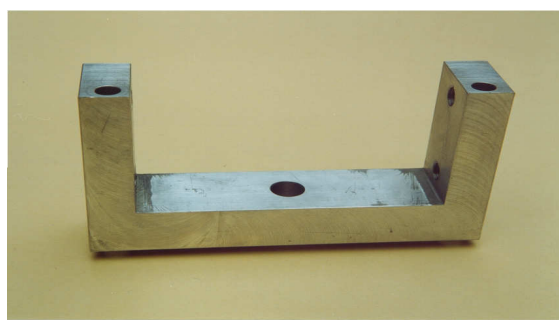
Gizzard Harvester compatible with Meyn Bearing blocks, support and ejection wheels



Rodon Int. nr:	Description:	Partnr.OEM:	Pos.nr:
GH.10.010	Bearing block for needle bearings S.S.	0125.0002.379.00 – 125.02.379	226
GH.10.042	Bearing block support	0125.0001.114.00 – 125.01.114	52
GH.10.043	Bearing block for conveyor shafts	0125.0025.003.22	
GH.10.044	Ejection wheel CD 6000	0125.0001.078.00	
GH.10.053	Ejection wheel CD 8000	0125.0025.001.31	
GH.10.017	Peelershaft bearing block	0125.0001.086.00 – 125.01.086	25
GH.10.018	Peelershaft bearing block	0125.0001.018.00 – 125.01.018	143
GH.10.085	Bearingblock peelerrollers	0125.0011.018.09	



GH.10.010



GH.10.042



GH.10.043



GH.10.017



GH.10.018



GH.10.085



GH.10.044

Gizzard Harvester compatible with Meyn Sprocket chain wheel and connecting shaft



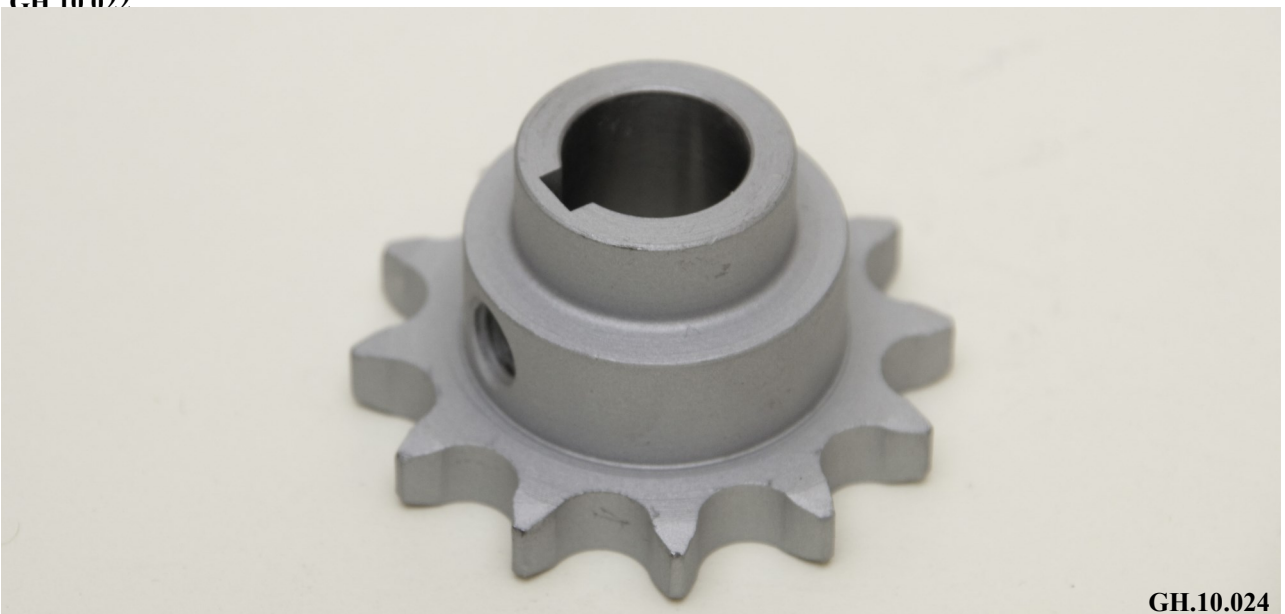
Rodon Int. nr:	Description:	Partnr.OEM:	Pos.nr:
GH.10.022	Disc gear ½" Z=22	0125.0001.442.00 – 125.01.442	
GH.10.024	Sprocket chain wheel ½" Z=12	0990.A504.009.00 – 990.0285	146
GH.10.024	Sprocket chain wheel ½" Z=12	0125.0001.424.00 – 125.01.424	255
GH.10.025	Sprocket chain wheel ½" Z=15	0990.A504.010.00 – 990.0310	148
GH.10.026	Sprocket chain wheel ½" Z=16	0990.A504.093.00 – 990.0302	69
GH.10.027	Sprocket chain wheel ½" Z=16	0990.A504.012.00 – 990.0301	83
GH.10.028	Sprocket chain wheel ½" Z=32	0990.A504.004.00 – 990.0323	85
GH.10.029	Sprocket chain wheel ½" Z=14	0990.A504.005.00 – 990.0288	86
GH.10.030	Sprocket chain wheel ½" Z=29	0125.0001.264.00 – 125.01.264	183
GH.10.031	Sprocket chain wheel ½" Z=14	0990.A504.008.00 – 990.0289	120
GH.10.032	Sprocket chain wheel ½" Z=25	0990.A504.007.00 – 990.0316	125
GH.10.033	Sprocket chain wheel ½" Z=20	0990.A504.006.00 – 990.0357	128
GH.10.034	Sprocket chain wheel ½" Z=40	0125.0001.425.00 – 125.01.425	241
GH.10.040	Connecting shaft for peelershafts S.S.	0125.0025.004.34	4



GH.10.022



GH.10.040



GH.10.024

Gizzard Harvester compatible with Meyn Carrier chain



Rodon Int. nr:	Description:	Partnr.OEM:	Pos.nr:
GH.10.009	Chain wheel for carrier chain Z=6 3/4"	0990.A507.032.00-125.01.257	220
GH.10.019	Rotation wheel for carrier chain	0125.0001.255.00-125.01.255	191
GH.10.502	Carrier chain CD6000	0990.MP00.000.07-125.01.370	198
GH.10.504	Carrier chain CD8000	0125.0025.000.35	
GH.10.506	Guidance for carrier chain (CD6000)	0125.0001.253.99	190
GH.10.507	Guidance for carrier chain (CD8000)	0125.0025.014.24	190



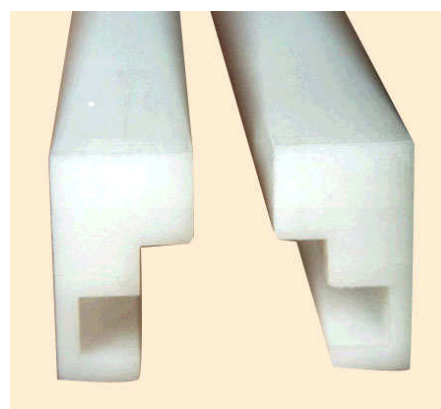
GH.10.009



GH.10.019



GH.10.502 / GH.10.504

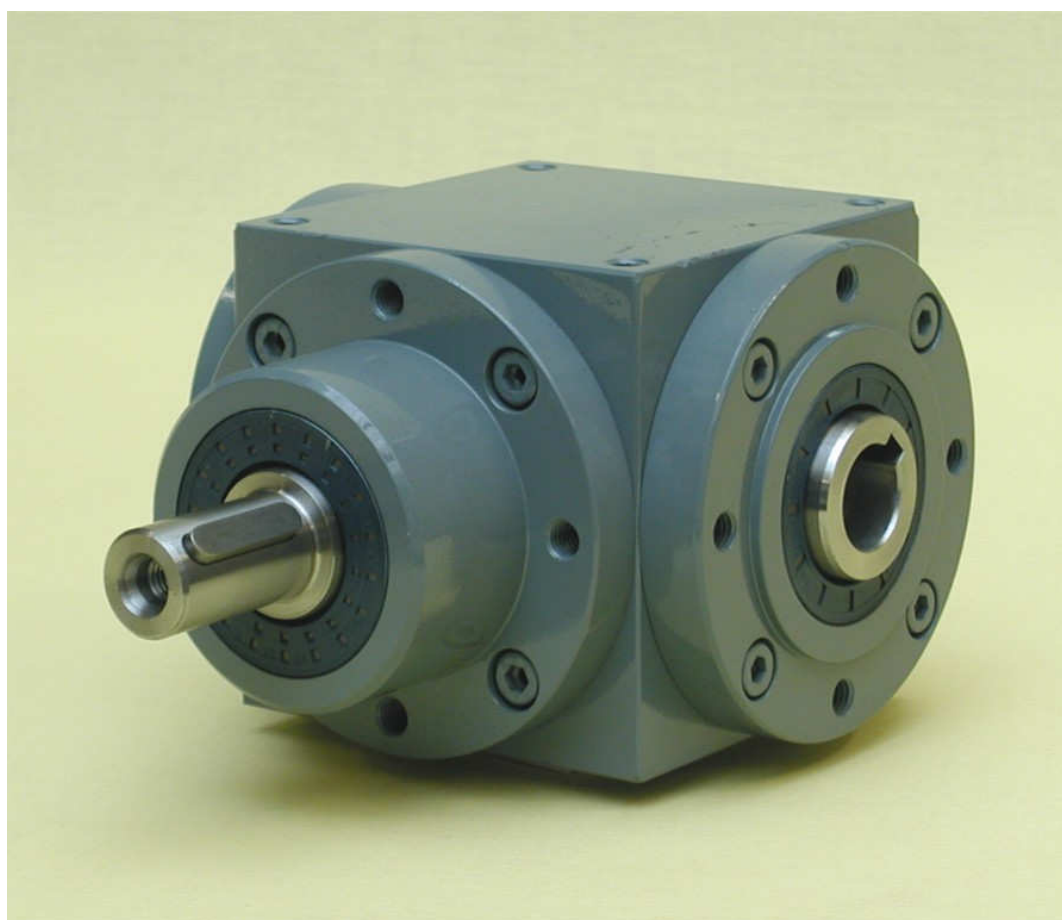


GH.10.506 / GH.10.507

Gizzard Harvester compatible with Meyn (CD6000 and CD8000) Gearbox



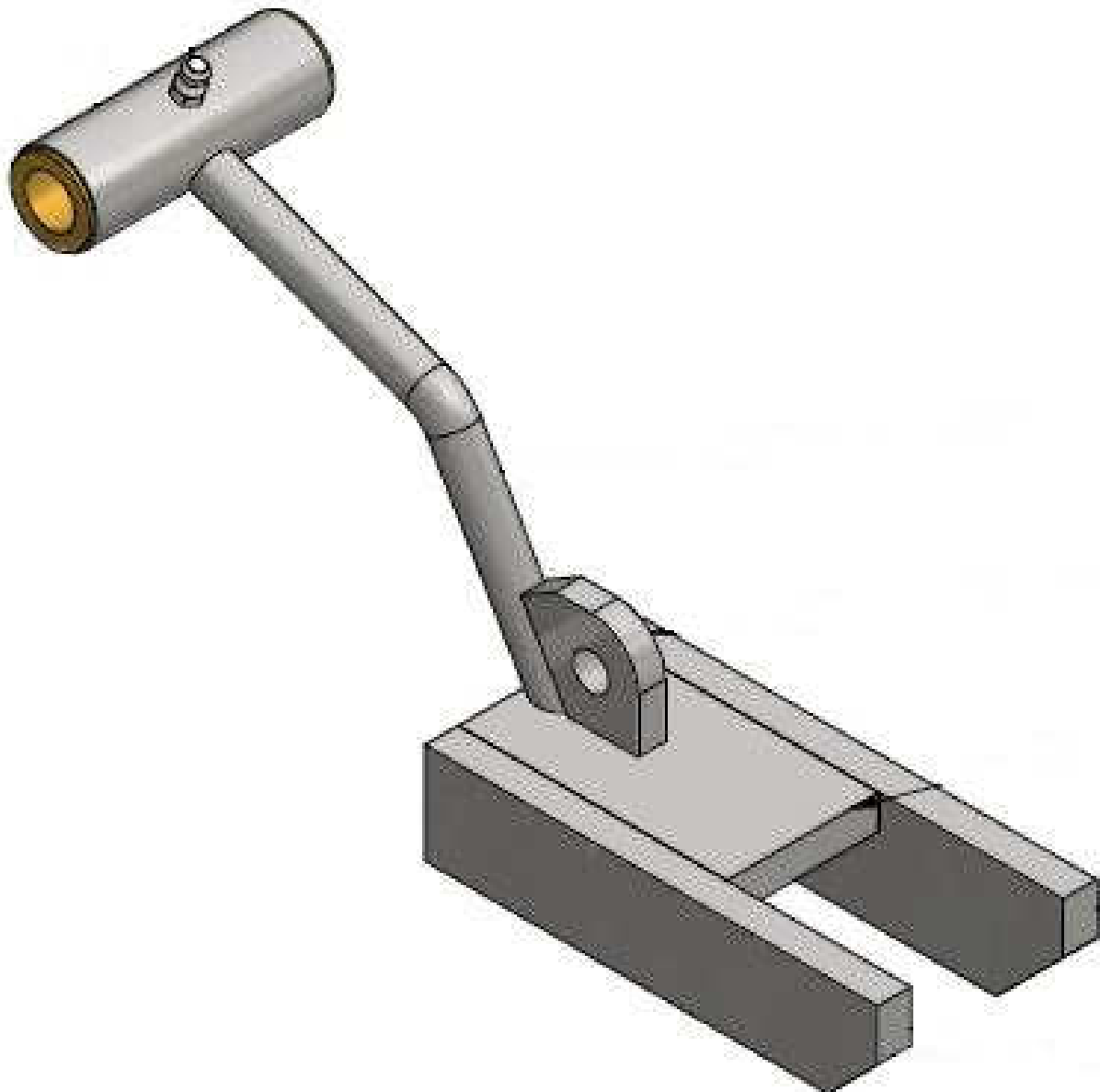
Rodon Int. nr:	Description:	Partnr.OEM:	Pos.nr:
GH.10.023	Bevel gearbox V120 1:1 CD6000	89.3230.904.0012 - 99.26165	123
GH.10.038	Bevel gearbox K140 1:1 CD8000	89.3230.904.0022	123



Gizzard Harvester compatible with Meyn Stamper Unit



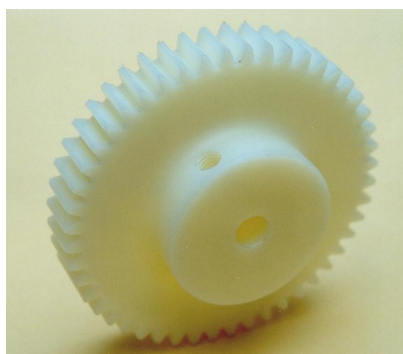
Rodon Int. nr:	Description:	Partnr.OEM:	Pos.nr:
GH.10.527	Stamper Unit	0125.0001.000.15	



Manual Control Table compatible with Meyn
 Peelershafts / bearing block for peelershafts / gear wheel



Rodon Int. nr:	Description:	Partnr.OEM:	Pos.nr:
CT.10.005	Bearing block for peelershafts	0144.0002.007.00 – 144.02.007	2/3
CT.10.006	Bearing block for peelershafts	0013.0000.001.00 – 19-530-76	66
CT.10.007	Bearing block for peelershafts	0013.0000.002.00 – 30-530-31	65
CT.10.008	Gearwheel Z=48 M2 Synthetic	0144.0002.005.00 – 144.02.005	5
CT.10.009	Gearwheel Z=80 M2 steel	0144.0002.004.00—144.02.004	
CT.10.501	Set of peelershafts – right side of table	0144.0002.000.22	1/2/18/64
CT.10.501	Set of peelershafts – left side of table	0144.0003.000.01	1/2/18/64



CT.10.501

Gizzard Harvester compatible with Stork (M60/M80/M105) Peelershafts and Spiral Gut Gears



Rodon Int. nr:	Description:	Partnr.OEM:	Pos.nr:
GH.20.500	Set Peelershafts	3R 514 318 / 3R 514 319	608 / 609
GH.20.504	Set Peelershafts, shaftsize D=17 mm	3M.616.665/666 / 393.9565	609
GH.20.504N	Set Peelershafts, for MG60/80 shaftsize D=17 mm	3M.616.665/666 / 393.9565	
GH.20.505	Set Peelershafts, shaftsize D=14 mm	3R 526 126 / 3M 526 127	608 / 609
GH.20.502	Spiral gut gears for M60	3R.515.402/403	815/816 – 820/821
GH.20.503	Spiral gut gears for M60/M80	3R 563 130 / 3R 563 131	815/816
GH.20.506	Spiral gut gears for M105		
GH.20.507	Spiral gut gears for MG30PT		
GH.20.508	Spiral gut gears for M60/M80	3R 515 402 / 3R 515 403	815/816
GH.20.509	Spiral gut gears for MG60/MG80	3M.616.732/733	



GH.20.504



GH.20.504N



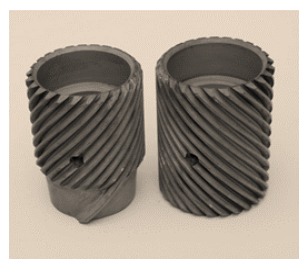
GH.20.505



GH.20.505



GH.20.502



GH.20.503



GH.20.508



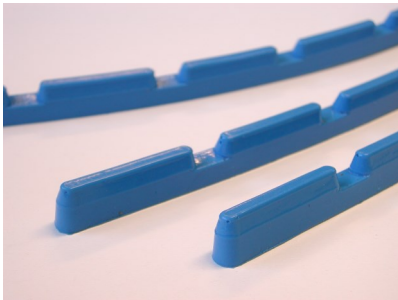
GH.20.509

Gizzard Harvester compatible with Stork

Various Items



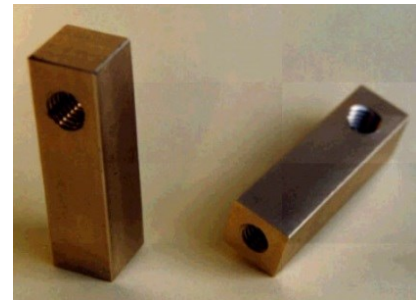
Rodon Int. nr:	Description:	Partnr.OEM:	Pos.nr:
GH.20.006	Gizzard separator strip	3R.521.082	
GH.20.007	Gizzard separator strip large	3R.522.060	819
GH.20.012	Slide block	4R.516.629	406
GH.20.008	Disc D=115x20,5	3R.515.356 - 3R.575.897	401
GH.20.009	Disc D=115x22,5	3R.515.357 - 3R.575.898	402
GH.20.017	Cylindrical bushing	4R.514.897	822/825
GH.20.018	S.S. Bushing	4R.522.750	844 M60/823 M80
LBC 25/30x25	Brass bushing	09.2000.151	845 M60/863 M80
VE.DR.015	Compression spring	4R.516.631	408
GH.20.016	Hardened bushing	4R.523.381	412 / 425
GH.20.039	Presser wheel D=134x22 7 slots	616.715 MG-80	6
GH.20.014	Bearing block (M80)	4R.538.857	628
GH.20.015	Bearing block (M60/M80)	4R.514.268	603 M60/606 M80
GH.20.069	Strip L=755mm	616.745	



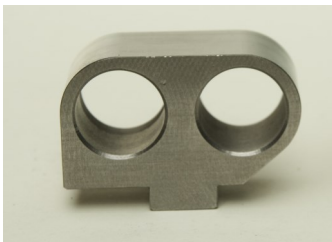
GH.20.007



GH.20.008/009



GH.20.012



GH.20.014



GH.20.015



VE.DR.015



GH.20.016



GH.20.017



GH.20.018



LBC 25/30x25

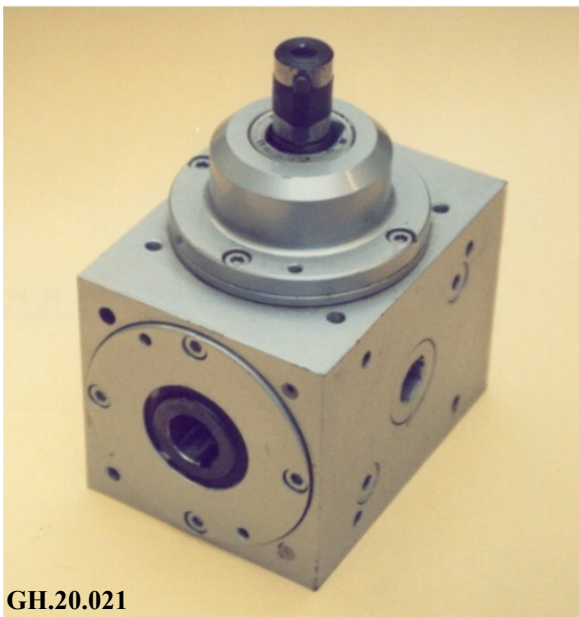
Gizzard Harvester compatible with Stork Motorreductor / Gearbox / Torque limiter



Rodon Int. nr:	Description:	Partnr.OEM:	Pos.nr:
GH.20.021	Gearbox 1:1	4R.514.247	702
GH.20.038	Motorreductor 3kW 1400/200RPM ZG2DK100L4		401
GH.20.041	Torque Limiter MG60/80	4M.616.719	



GH.20.038



GH.20.021



GH.20.041

Manual Control Table compatible with Stork Set of peelershafts



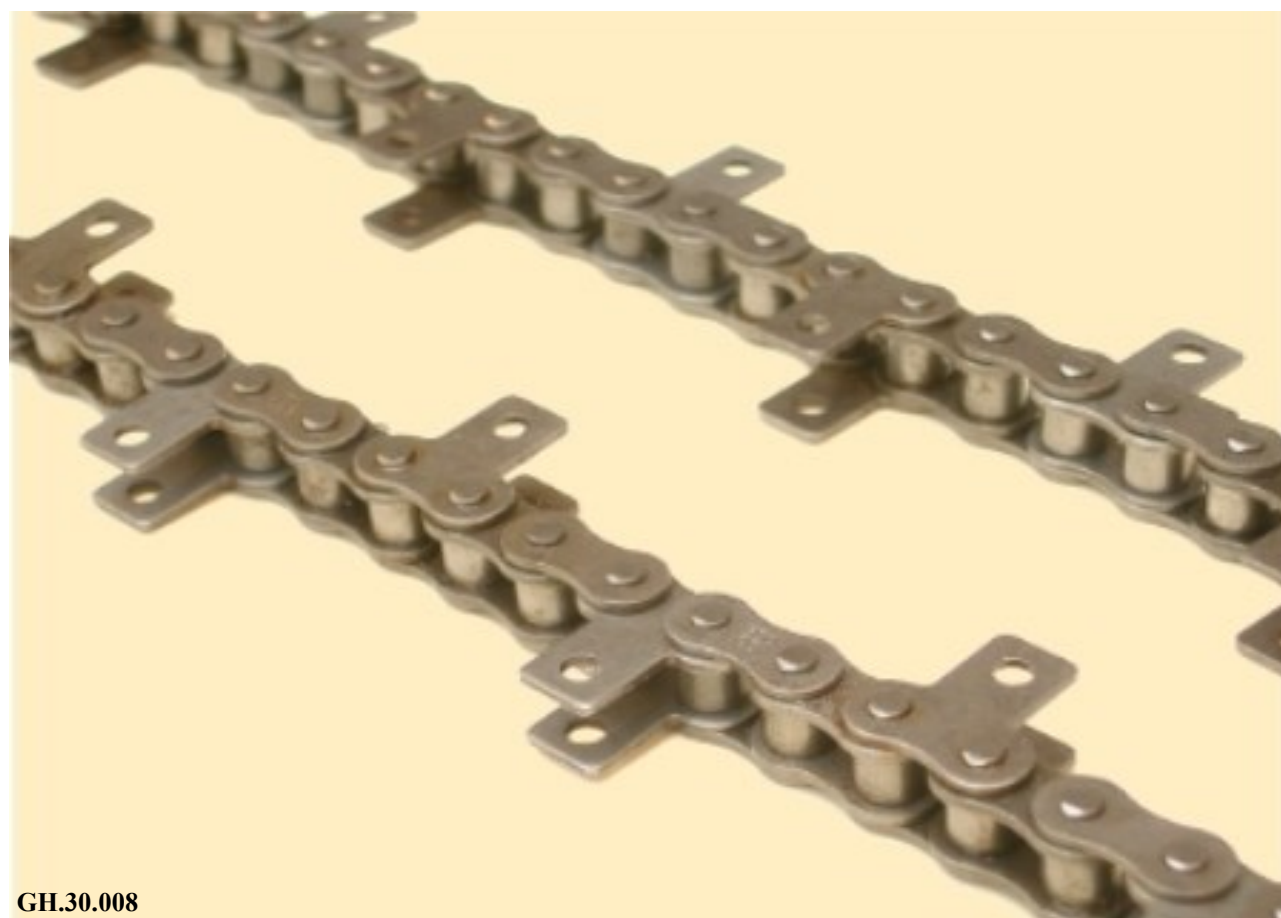
Rodon Int. nr:	Description:	Partnr.OEM:	Pos.nr:
CT.20.501	Set of peelershafts	3R 434 101 / 3R 434 102	6
CT.20.502	Set of peelershafts	3R 434 103 / 3R 532 787	



Gizzard machine compatible with Systemate
 Legprocessor compatible with Meyn
 Feed chain / Pointed chain 1/2" stainless steel



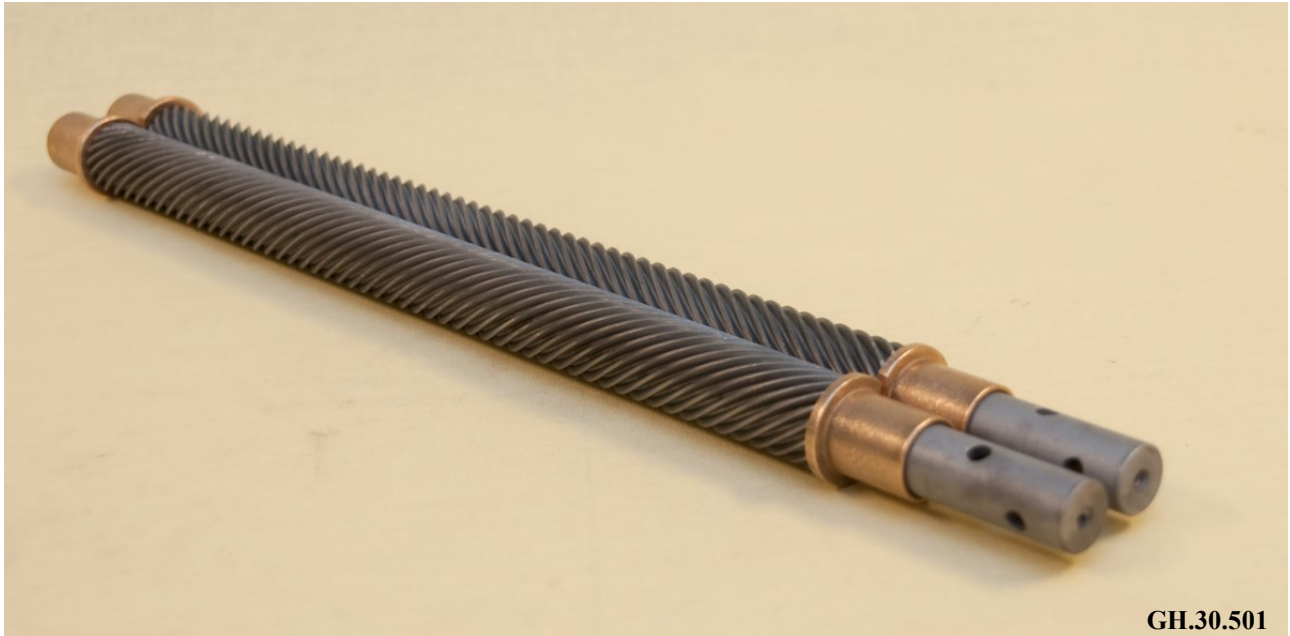
Rodon Int. nr:	Description:	Partnr.OEM:	Pos.nr:
GH.30.008	Transport chain	GIMA-1000-52	42
KE.PU.1000	Feed chain	CB.13.040	40
KE.PU.0673	Pointed chain	0162.0002.032.00	23
KE.PU.0810	Pointed chain	0162.0002.027.04	96
KE.PU.0001	Connecting link	89.2936.011.0002 – 99.25816	



Gizzard Harvesters compatible with Systemate Set peelershafts



Rodon Int. nr:	Description:	Partnr.OEM:	Pos.nr:
GH.30.501	Peelershafts (1 pair)	CB.013.033	



Gizzard Harvesters compatible with Linco Set peelershafts



Rodon Int. nr:	Description:	Partnr.OEM:	Pos.nr:
GH.40.501	Set peelershafts	66.122.3711 - 66.122.3101	



GH.40.501



GH.40.501