

# SECTION TWO

**Spare parts for: Defeathering machines**

# Defeathering machines

## Picking finger



Rodon Int. nr:	Description:	Partnr.OEM:	Pos.nr:
PV.00.001	LC 1 black 45/55/60/65/68/73	per 500	
PV.00.004	SALC 1 black 45/55/60	per 500	
PV.00.007	LC 1 natural 45/55/60/63/65	per 500	
PV.00.009	LC 3	per piece	
PV.00.010	Lino 45/60/90/110 black 47/54/60/65	per 600	
PV.00.014	Lino 45/60/90 yellow 47/54/60	per 600	
PV.00.017	Kop 45/60/90 black	per 600	
PV.00.020	LC 7	per piece	
PV.00.021	Codan 65	per piece	
PV.00.028	Gina 60/70/90/110 54/57/60/65	per 500	
PV.00.034	LC 6 black	per piece	
PV.00.036	LC 6 yellow	per piece	
PV.00.035	DB	per piece	



**More versions available in different sizes and hardnesses**

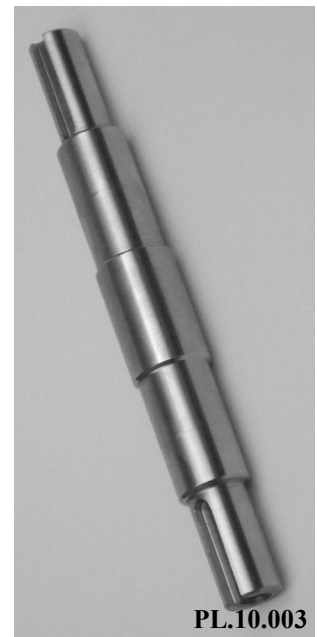
# Picker compatible with Meyn Bearinghousing and pickershafts



Rodon Int. nr:	Description:	Partnr.OEM:	Pos.nr:
PL.10.001	Bearinghousing–old style pickershaft	0031.0000.049.00	23
PL.10.002	Bearinghousing–new style pickershaft	0990.A208.001.00	142
PL.10.003	Pickershaft old style	0990.A013.002.00	22
PL.10.004	Pickershaft new style	0990.A013.001.00	139
PL.10.501	Bearinghousing old type complete	0990.A208.000.01 – 031.00.100	27-700/154
PL.10.502	Bearinghousing new type complete	0990.A208.000.02 – 990.2640	154



PL.10.501



PL.10.003



PL.10.004



PL.10.502

# Picker compatible with Meyn Pickerdiscs and fingerdiscs



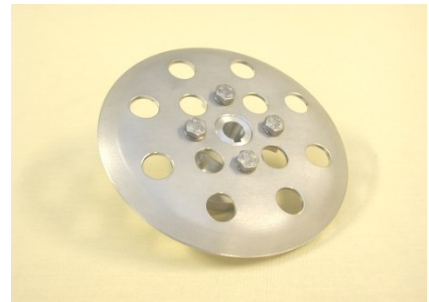
Rodon Int. nr:	Description:	Partnr.OEM:	Pos.nr:
PL.10.008	Fingerplate S.S. 12 holes	0990.PL29.001.02 – 990.2008	149
PL.10.009	Fingerplate Alu. 6 holes		149
PL.10.010	Fingerplate holder (hub) 12 holes	0990.PL29.002.02 – 990.3546	150/12
PL.10.018	Fingerplateholder (hub) Alu. 6 holes		
PL.10.036	Fingerplate S.S. 6 holes		
PL.10.037	Fingerplate holder (hub) 12 holes		
PL.10.038	Ring		
PL.10.503	Pickerdisc S.S. 12 holes compl. with hub	0990.PL29.000.02 – 990.2779	146-150/155
PL.10.504	Pickerdisc Alu. 6 holes complete		
PL.10.510	Fingerdisc complete with hub 6 holes		



PL.10.008



PL.10.010



PL.10.503



PL.10.036



PL.10.037



PL.10.038



PL.10.510



PL.10.009



PL.10.504

Picker compatible with Meyn  
Motor and fingerdisc pulley



Rodon Int. nr:	Description:	Partnr.OEM:	Pos.nr:
PL.10.011	Fingerdisc pulley D=150x65 bore 16	0990.AD01.000.01 – 990.1436	156
PL.10.023	Fingerdiscpulley D=100x85 bore 16	0014.D100.000.07 – 014.00.007	186
PL.10.012	Motor pulley D=150x85 bore 38	0990.AD01.003.00 – 990.1437	109 / 3-700
PL.10.013	Motor pulley D=150x85 bore 28	0990.AD01.002.00 – 990.0890	109 / 3-700
PL.10.014	Motor pulley D=100x100 bore 38	0014.D100.006.00 – 014.00.006	109 / 3-700
PL.10.026	Motor pulley D=125x85 bore 38	0990.AD03.002.00 – 990.0891	109 / 3-700
PL.10.027	Motor pulley D=125x85 bore 28	0990.AD03.001.00 – 990.0889	109 / 3-700

PL.10.014



PL.10.023



PL.10.011

PL.10.013



# Picker compatible with Meyn Drive belt



Rodon Int. nr:	Description:	Partnr.OEM:	Pos.nr:
<b>PL.10.005</b>	<b>4130x60 for JM32, 64, 48, 96</b>	<b>89.2989.153.0005</b>	<b>110</b>
<b>PL.10.006</b>	<b>5050x60 for JM40, 60</b>	<b>89.2989.153.0003</b>	<b>110</b>
<b>PL.10.007</b>	<b>3810x80 for KM72</b>	<b>89.2989.153.0006</b>	<b>110</b>
<b>PL.10.020</b>	<b>3820x80 for KM72</b>		<b>110</b>
<b>PL.10.021</b>	<b>5060x60 for JM 40, 60</b>		<b>110</b>
<b>PL.10.022</b>	<b>4140x60 for JM32, 64, 48, 96</b>		<b>110</b>
<b>PL.10.029</b>	<b>4040x60</b>	<b>89.2989.153.0056</b>	<b>110</b>



Picker compatible with Meyn  
Gearbox / Reductor



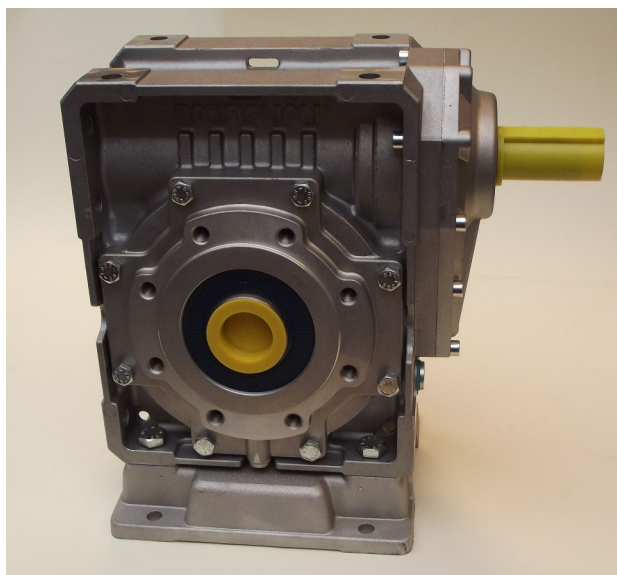
Rodon Int. nr:	Description:	Partnr.OEM:	Pos.nr:
<b>PL.10.035</b>	<b>Gearbox VF86/N/80:1 shaft 35</b>	<b>89.3238.900.0011</b>	<b>23</b>
<b>PL.10.035B</b>	<b>Gearbox W86 U 80 HS</b>		<b>23</b>
<b>1100.1825.1201</b>	<b>Reductor(spiral gear)</b>	<b>99.26110</b>	<b>39</b>



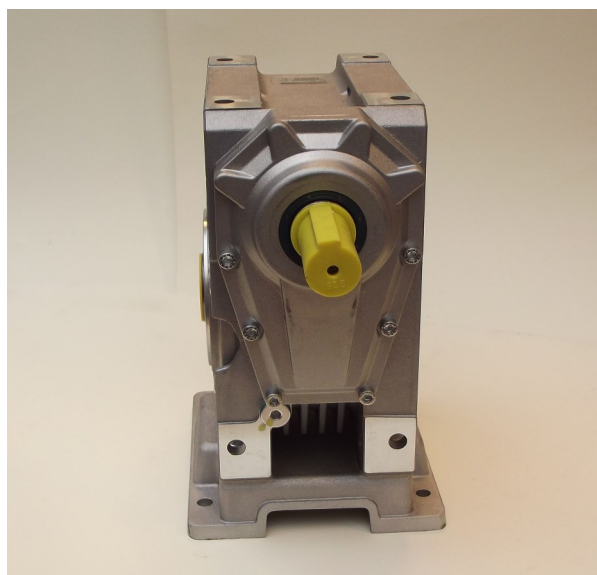
**PL.10.035**



**1100.1825.1201**



**PL.10.035B**

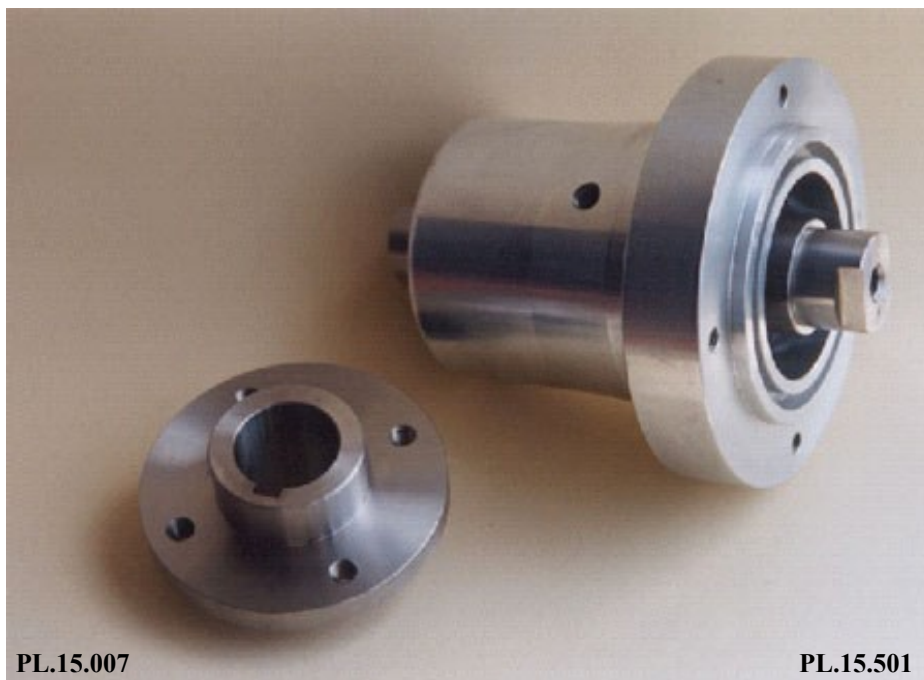


**PL.10.035B**

# Turkey Picker compatible with Meyn Bearinghousing complete



Rodon Int. nr:	Description:	Partnr.OEM:	Pos.nr:
PL.15.001	Bearinghousing turkeypicker	0081.DB01.022.07	
PL.15.001B	Bearinghousing turkeypicker		
PL.15.002	Pickershaft turkeypicker	0081.DB04.004.02	
PL.15.003	Pulley for turkeypicker D=125mm	0990.AD03.003.00	
PL.15.004	Distance ring S.S.	0081.DB01.034.07	
PL.15.005	Watercap	0081.DB01.033.07	
PL.15.006	Spacer Sleeve	0081.DB04.002.42	
PL.15.007	Flange	0081.DB01.006.08	
PL.15.007A	Flange	0081.DB01.019.40	
PL.15.008	Pickershaft extended S.S. turkeypicker	0081.DB04.013.40	
PL.15.009	Pickershaft (gearwheel version)	0081.DB01.004.43	
PL.15.010	Gearwheel Z=38		
PL.15.011	Pickershaft 30/35 L=192		
PL.15.011A	Pickershaft 30/35 L=190		
PL.15.012	Pickershaft 30/35 L=222		
PL.15.012A	Pickershaft 30/35 L=220		
PL.15.501	Bearinghousing complete	0081.DB04.000.43	
PL.15.502	Bearinghousing complete, incl extended shaft	0081.DB04.000.	



PL.15.008

PL.15.009

PL.15.011A

PL.15.007

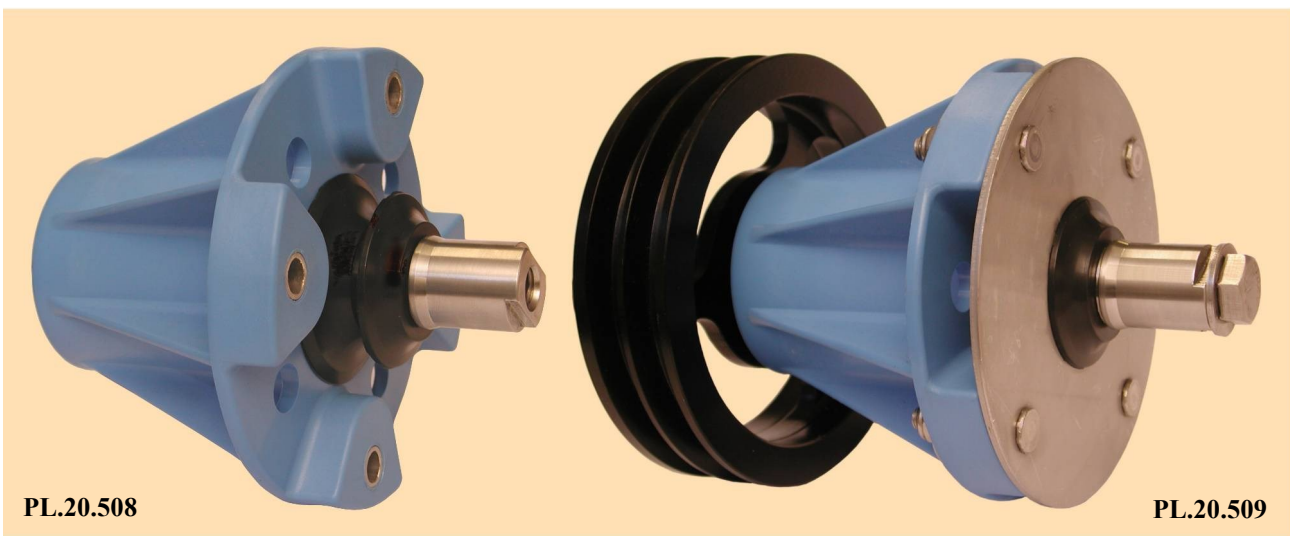
PL.15.501



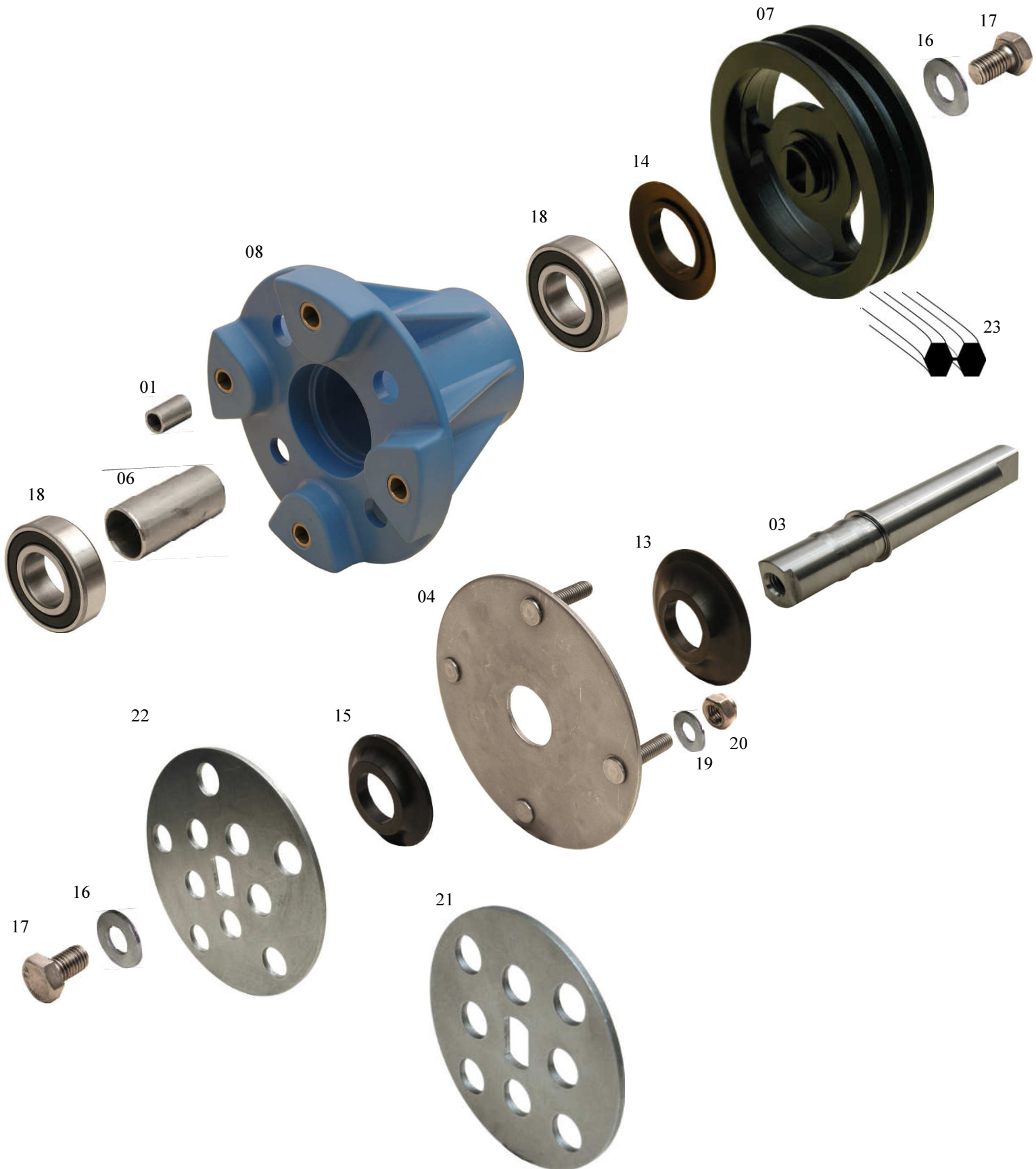
# Pickerparts compatible with Stork Bearinghousing new model



Rodon Int. nr:	Description:	Partnr.OEM:	Pos.nr:
PL.20.037	Bush	4M.662.030	01
PL.20.025	Shaft	3M.662.040	03
PL.20.036	Mounting plate	3M.662.049	04
PL.20.035	Bush	4M.662.015	06
PL.20.032	Disc (Pulley)	3M.664.064	07
PL.20.028	Bearing race	2M.662.013	08
PL.20.029	Ring	4M.669.429	13
PL.20.030	Ring	4M.662.633	14
PL.20.031	Ring	4M.642.856	15
PL.20.039	Ring	09.0800.371	16
1001.0933.1220	Bolt (M12x20)	00.0138.287	17
1002.0000.0004	Bearing	00.3431.764	18
1001.9021.0002	Ring(M8)	00.0351.442	19
1001.0985.0008	Nut(M8)	00.0163.350	20
PL.20.033	8 hole S.S. fingerdisc flat	3M.653.666	21 Rodon pos.
PL.20.034	10 hole S.S. fingerdisc flat	3M.662.048	22 Rodon pos.
PL.20.026	Drive belt 3800 double V	00.4165.953	23 Rodon pos.
PL.20.027	Drive belt 4200 double V	00.4165.954	23 Rodon pos.
PL.20.508	Bearingh. compl. w. shaft and seals	4M.667.346	51
PL.20.509	Bearingh. compl. w. mount. plate and pulley	4M.662.050	38



# Pickerparts compatible with Stork Bearinghousing new model



Pickerparts compatible with Stork  
 Aluminum fingerdiscs, Bearinghousing and Belt pulleys



Rodon Int. nr:	Description:	Partnr.OEM:	Pos.nr:
PL.20.010	Fingerdisc with 10 holes Alu.	3R 445 642	32 / 1401
PL.20.012	Fingerdisc with 8 holes Alu.	4R 445.643	32 / 2602
PL.20.013	Labyrinth disc	4R 445.641	1406
PL.20.015	Bearinghousing only	3R 440 592	8-5
PL.20.018	Flat belt pulley	3R 448 098	105/2606
PL.20.019	Crowned belt pulley	3R 448 097	205/2506
PL.20.020	Knurled belt pulley	3R 448 099	305/2406



PL.20.010



PL.20.018



PL.20.015



PL.20.012



PL.20.019



PL.20.013



PL.20.020



PL.20.015

Pickerparts compatible with Stork  
Bearinghousing complete with fingerplate



Rodon Int. nr:	Description:	Partnr.OEM:	Pos.nr:
PL.20.501	B.housing w.10 h.disc / flat pull.	2-012-09-06927	
PL.20.502	B.housing w.10 h.disc / crowned pull.		
PL.20.503	B.housing w.10 h.disc / knurled pull.		
PL.20.505	B.housing w. 8 h.disc / flat pull.		
PL.20.506	B.housing w. 8 h.disc / crowned pull.		
PL.20.507	B.housing w. 8 h.disc / knurled pull.		



# Pickerparts compatible with Stork Drive belt



Rodon Int. nr:	Description:	Partnr.OEM:	Pos.nr:
<b>PL.20.001</b>	<b>3775x45</b>		<b>1607</b>
<b>PL.20.002</b>	<b>3781x45</b>		
<b>PL.20.003</b>	<b>3800x45</b>	<b>4R 440 988</b>	
<b>PL.20.004</b>	<b>3880x55</b>		
<b>PL.20.005</b>	<b>4181x45</b>		
<b>PL.20.006</b>	<b>4210x45</b>	<b>4R 445 735</b>	<b>1506</b>
<b>PL.20.007</b>	<b>4242x45</b>		
<b>PL.20.008</b>	<b>4255x45</b>	<b>4R 508 703</b>	<b>1607</b>
<b>PL.20.009</b>	<b>1778x76 for CM 100</b>		



# Picker compatible with Systemate Gears, bearing housing and shafts



Rodon Int. nr:	Description:	Partnr.OEM:	Pos.nr:
PL.30.001	Picker shaft short L=110mm	BB.24.062	
PL.30.002	Picker shaft long L=140mm	BB.24.063	
PL.30.003	Gear R.H. Z=50, synthetic	BB.24.059	
PL.30.004	Gear L.H. Z=50, synthetic	BB.24.058	
PL.30.005	Gearwheel Z=50 R.H., synthetic beveled	72.10.001.900	
PL.30.006	Gearwheel Z=50 L.H., synthetic beveled	72.10.001.800	
PL.30.007	Motor gear Z=26, aluminum	BB 24.077	
PL.30.008	Flange gear Z=50, synthetic	BB 24.078	
PL.30.009	Bearinghousing Alu.	BB.24.048	
PL.30.010	Distance ring	BB.24.060	
PL.30.501	Bearing housing complete with shaft	78.80.000.500	
PL.30.502	Pickershaft short, incl. bearings		
PL.30.503	Bearing housing assy, without shaft		
PL.30.504	Bearing housing complete with long shaft		



PL.30.001



PL.30.002



PL.30.004 PL.30.003



PL.30.005 / PL.30.006



PL.30.007



PL.30.008



PL.30.009



PL.30.010



PL.30.501



PL.30.502



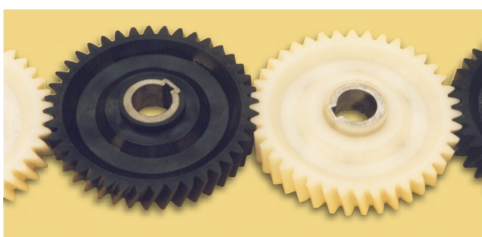
PL.30.504

# Picker compatible with Linco

## Various Items



Rodon Int. nr:	Description:	Partnr.OEM:	Pos.nr:
PL.40.001	Gearwheel Z=26, B=26, bore=24	36.265.3001	
PL.40.002	Gearwheel Z=40, B=26, bore=25 LH white	36.405.3003	
PL.40.003	Fingerdisc Alu 6 holes V left	12.270.0514 – 12.270.0502	
PL.40.004	Fingerdisc Alu 6 holes H right	12.270.0513 – 12.270.0501	
PL.40.005	Coupling sleeve UC DC 42 S	58.112.0001	
PL.40.007	Pickershaft short	610.301.151	
PL.40.008	Pickershaft long	610.301.470	
PL.40.009	Gearwheel Z=40, B=26, bore=25 RH black	36.405.3001 Sap nr.: 153838	
PL.40.010	Dust cap		
PL.40.011	Coupling sleeve UC DC 28 S	58.111.0001	
PL.40.014	Coupling half bore 25mm	58.112.2502	
PL.40.020	Handwheel	574145017	
PL.40.032	Coupling half UCDC bore 28mm	58.112.2801	
PL.40.035	Roll pin	40.001.936	
PL.40.038	End cap	52.198.380	
PL.40.043	Bolt		
PL.40.045	Ring		
PL.40.046	Nut		
PL.40.047	Pinion gear 14T		
PL.40.048	Cap, seal		
PL.40.049	Oil seal		
PL.40.054	Bearinghousing		
PL.40.055	Gear		
PL.40.056	Shim		
PL.40.101	Grease fitting (90°)	55.106.0002	
PL.40.501	Picker bearing housing complete		
1001.0912.0608	Socket head screw		



PL.40.009

PL.40.002



PL.40.003

PL.40.004



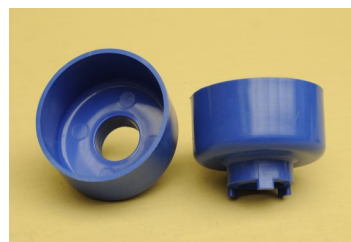
PL.40.101



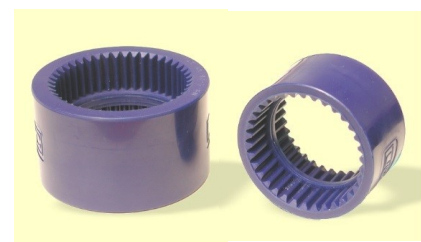
PL.40.007

PL.40.008

PL.40.007A



PL.40.010



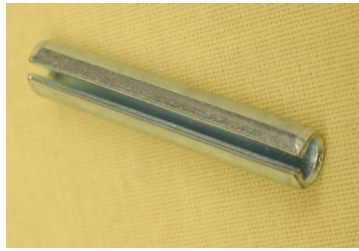
PL.40.005

PL.40.011

Picker compatible with Linco  
Various Items



PL.40.030



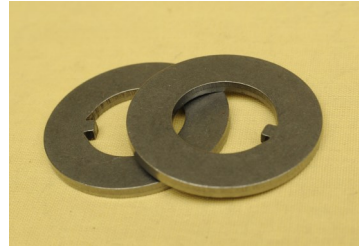
PL.40.035



PL.40.038



PL.40.043



PL.40.045



PL.40.046



PL.40.047



PL.40.048



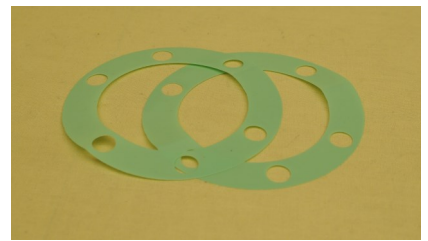
PL.40.049



PL.40.054



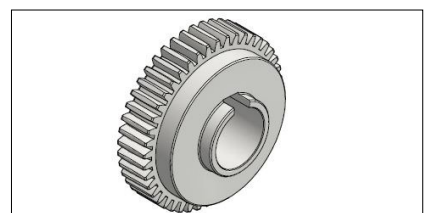
PL.40.055



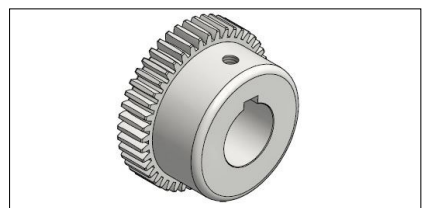
PL.40.056



PL.40.501



PL.40.014



PL.40.032

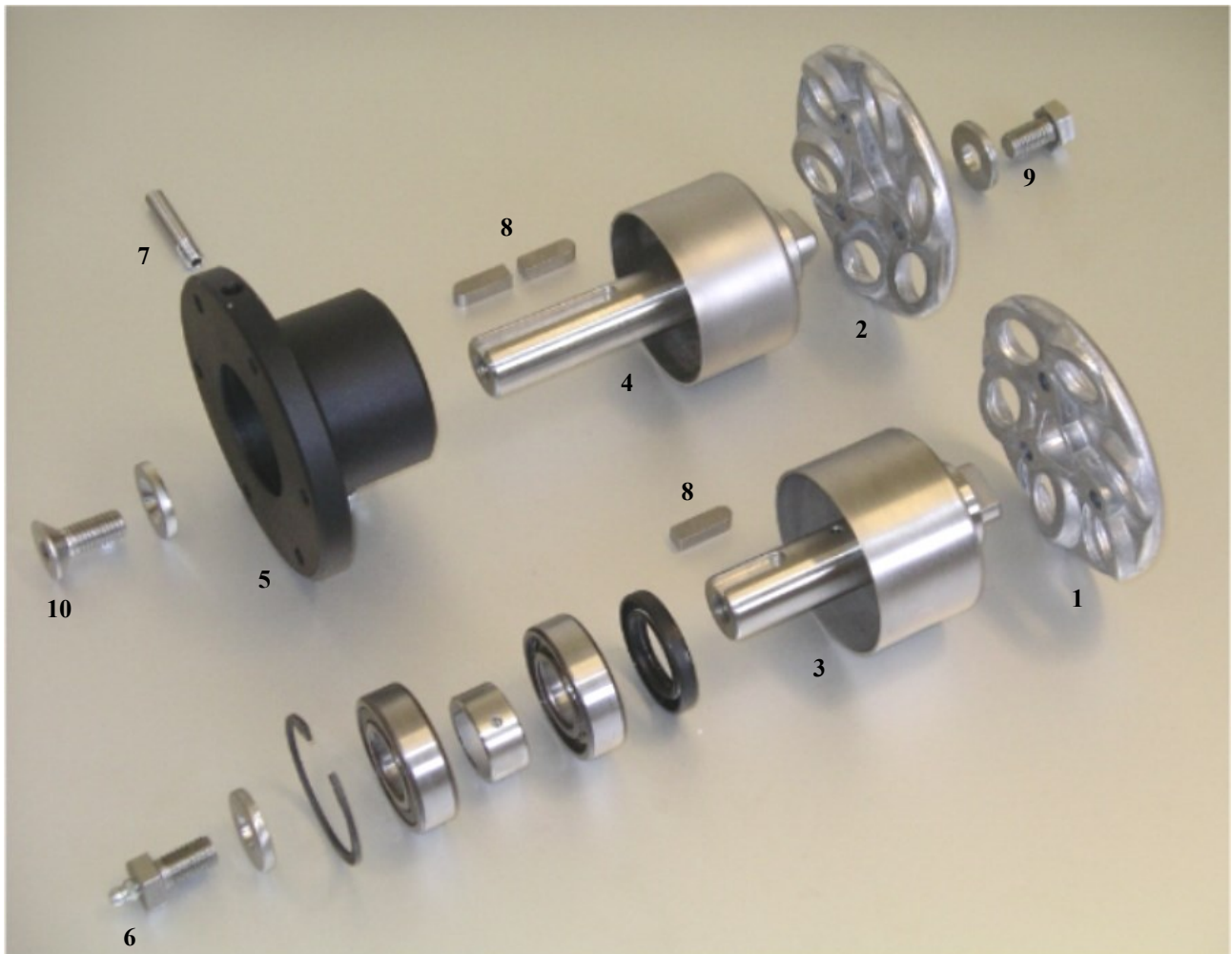


# Picker compatible with Linco

## Bearing assy



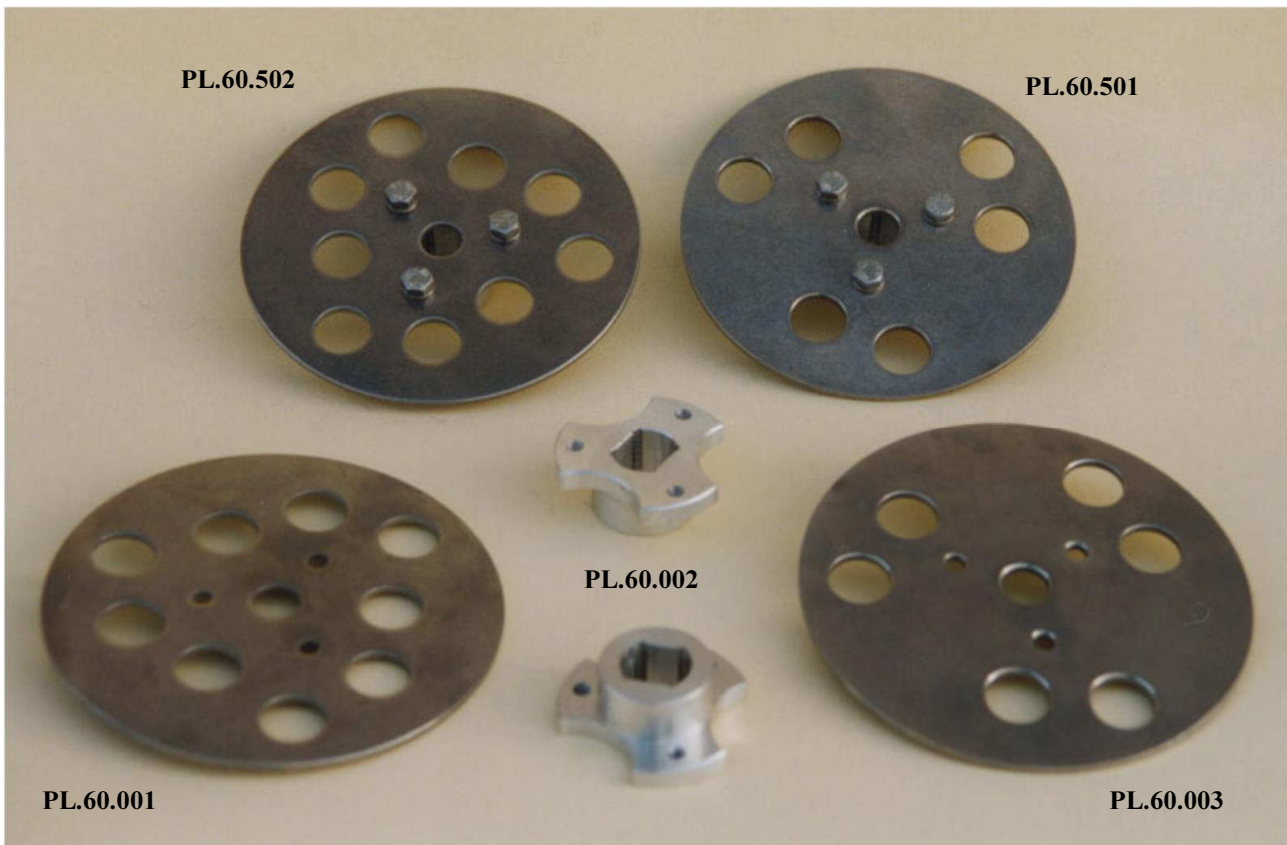
Rodon Int. nr:	Description:	Partnr.OEM:	Pos.nr:
PL.40.003	Fingerdisc Alu 6 holes V left	12.270.0514—12.270.0502	(Rodon pos.1)
PL.40.004	Fingerdisc Alu 6 holes H right	12.270.0513—12.270.0501	(2)
PL.40.007A	Pickershaft short incl. SS drip cap	12.270.2916	(3)
PL.40.008A	Pickershaft long incl. SS drip cap	12.270.2915	(4)
PL.40.860	Bearinghousing		(5)
PL.40.030	Greasing bolt		(6)
PL.40.100	Extender for nipple		(7)
1006.6885.0003	Sunk key 8x7x25 SS	59.010.8525	(8)
1001.0933.1220	Bolt SS M12x20	50.112.1025	(9)
1001.7991.1220	Countersunk headscrew M12x20 S.S		(10)



Picker compatible with Cattaruzzi  
Fingerdisc 6 or 9 holes and (hand) gears



Rodon Int. nr:	Description:	Partnr.OEM:	Pos.nr:
PL.60.001	Fingerdisc 9 holes S.S.		
PL.60.002	Fingerdisc holder Alu.		
PL.60.003	Fingerdisc 6 holes S.S.		
PL.60.004	Left hand gear		
PL.60.005	Right hand gear		
PL.60.006	Gear from a bottom bank		
PL.60.501	Fingerdisc 6 holes complete		
PL.60.502	Fingerdisc 9 holes complete		



# Market Picker

## Bearing housings, fingerdiscs and gearwheels



Rodon Int. nr:	Description:	Partnr.OEM:	Pos.nr:
PL.80.001	Shaft with retaining cap-short version		
PL.80.002	Shaft with retaining cap-long version		
PL.80.003	Finger 9 holes, S.S.		
PL.80.004	Coupling insert		
PL.80.005	Gearwheel Z=58 R.H.	36.585.3001	
PL.80.006	Gearwheel Z=58 L.H.	36.585.3002	
PL.80.501	Bearinghousing complete		
PL.80.502	Bearinghousing complete, drive side		

